

## Product datasheet for **TP303444L**

### MID1IP1 (NM\_021242) Human Recombinant Protein

#### Product data:

Product Type:	Recombinant Proteins
Description:	Recombinant protein of human MID1 interacting protein 1 (gastrulation specific G12 homolog (zebrafish)) (MID1IP1), transcript variant 1, 1 mg
Species:	Human
Expression Host:	HEK293T
Expression cDNA Clone or AA Sequence:	>RC203444 protein sequence <b>Red</b> =Cloning site <b>Green</b> =Tags(s)  MMQICDTYNQKHSLFNAMNRFIGAVNNMDQTMVPSLLRDVPLADPGLDNDVGVVEVGGSGGCLEERTPPV PDSGSANGSFFAPSRDMYSHYVLLKSIRNDIEWGVLHQPPPPAGSEEGSAWKS KDILVDLGHLEGADAGE EDLEQQFH YHLRGLHTVLSK LTRKANILT NRYKQEIGFGN WGH  <b>TRTRPLEQKLISEEDLAANDILDYKDDDDKV</b>
Tag:	C-Myc/DDK
Predicted MW:	20 kDa
Concentration:	>0.05 µg/µL as determined by microplate BCA method
Purity:	> 80% as determined by SDS-PAGE and Coomassie blue staining
Buffer:	25 mM Tris-HCl, 100 mM glycine, pH 7.3, 10% glycerol
Preparation:	Recombinant protein was captured through anti-DDK affinity column followed by conventional chromatography steps.
Note:	For testing in cell culture applications, please filter before use. Note that you may experience some loss of protein during the filtration process.
Storage:	Store at -80°C.
Stability:	Stable for 12 months from the date of receipt of the product under proper storage and handling conditions. Avoid repeated freeze-thaw cycles.
RefSeq:	<a href="#">NP_067065</a>
Locus ID:	58526
UniProt ID:	<a href="#">Q9NPA3</a>



[View online »](#)

RefSeq Size: 3795

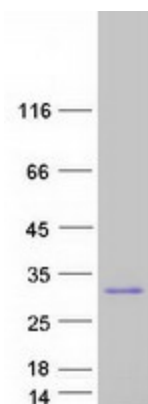
Cytogenetics: Xp11.4

RefSeq ORF: 549

Synonyms: G12-like; MIG12; S14R; STRAIT11499; THRSPL

Summary: Plays a role in the regulation of lipogenesis in liver. Up-regulates ACACA enzyme activity. Required for efficient lipid biosynthesis, including triacylglycerol, diacylglycerol and phospholipid. Involved in stabilization of microtubules (By similarity).[UniProtKB/Swiss-Prot Function]

### Product images:



Coomassie blue staining of purified MID1IP1 protein (Cat# [TP303444]). The protein was produced from HEK293T cells transfected with MID1IP1 cDNA clone (Cat# [RC203444]) using MegaTran 2.0 (Cat# [TT210002]).