

## Product datasheet for **TP303434L**

### **PNO1 (NM\_020143) Human Recombinant Protein**

#### **Product data:**

**Product Type:** Recombinant Proteins

**Description:** Recombinant protein of human partner of NOB1 homolog (*S. cerevisiae*) (PNO1), 1 mg

**Species:** Human

**Expression Host:** HEK293T

**Expression cDNA Clone  
or AA Sequence:** >RC203434 protein sequence  
**Red**=Cloning site **Green**=Tags(s)

MESEMETQSARAEEGFTQVTRKGGRRAKKRQAEQLSAAGEGGDAGRMDTEEARPAKRPVFPPLCGDGLLS  
GKEETRKIPVPANRYTPLKENWMKIFTPIVEHLGLQIRFNLKSRNVEIRTCKETKDVSALTKAADFVKAF  
ILGFQVEDALALIRLDDLFLSEFETDVKPLKGDHLSRAIGRIAGKGGKTKFTIENVTRTRIVLADVHVH  
ILGSFQNIKMARTAICNLILGNPPSKVYGNIRAVASRSADRF

**TRTRPLEQKLISEEDLAANDILDYKDDDDKV**

**Tag:** C-Myc/DDK

**Predicted MW:** 27.7 kDa

**Concentration:** >0.05 µg/µL as determined by microplate BCA method

**Purity:** > 80% as determined by SDS-PAGE and Coomassie blue staining

**Buffer:** 25 mM Tris-HCl, 100 mM glycine, pH 7.3, 10% glycerol

**Preparation:** Recombinant protein was captured through anti-DDK affinity column followed by conventional chromatography steps.

**Note:** For testing in cell culture applications, please filter before use. Note that you may experience some loss of protein during the filtration process.

**Storage:** Store at -80°C.

**Stability:** Stable for 12 months from the date of receipt of the product under proper storage and handling conditions. Avoid repeated freeze-thaw cycles.

**RefSeq:** [NP\\_064528](#)

**Locus ID:** 56902

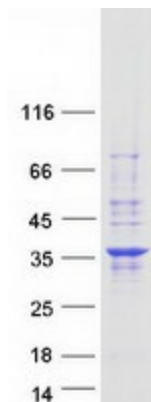
**UniProt ID:** [Q9NRX1](#)



[View online »](#)

RefSeq Size:	1994
Cytogenetics:	2p14
RefSeq ORF:	756
Synonyms:	KHRBP1; RRP20
Summary:	Positively regulates dimethylation of two adjacent adenosines in the loop of a conserved hairpin near the 3'-end of 18S rRNA (PubMed:25851604).[UniProtKB/Swiss-Prot Function]

### Product images:



Coomassie blue staining of purified PNO1 protein (Cat# [TP303434]). The protein was produced from HEK293T cells transfected with PNO1 cDNA clone (Cat# [RC203434]) using MegaTran 2.0 (Cat# [TT210002]).