

## Product datasheet for **TP303423M**

### START domain containing 7 (STARD7) (NM\_139267) Human Recombinant Protein

#### Product data:

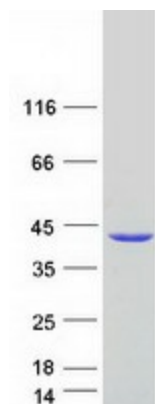
Product Type:	Recombinant Proteins
Description:	Recombinant protein of human START domain containing 7 (STARD7), transcript variant 2, 100 µg
Species:	Human
Expression Host:	HEK293T
Expression cDNA Clone or AA Sequence:	>RC203423 protein sequence <b>Red</b> =Cloning site <b>Green</b> =Tags(s)
	MAALAGVFWDEERIQEEELQRSINEMKRLEEMSNMFQSSGVQHHPPEPKAQTEGNEDSEGKEQPWEMVM DKKHFKLWRRPITGTHLYQYRVFGTYTDVTPRQFFNVQLDTEYRKKWDALVIKLEVIERDVVSGSEVLHW VTHFPYPMYSRDYVYVRRYSVDQENMMMLVSRAVEHPSVPEFVVRVRSYEQMVIRPHKSFDENGFD YLLTYSNPNQTVFPRYCVSWMVSSGMPDFLEKLHMATLKAKNMEIKVKDYISAKPLEMSSEAKATSQSSE RKNEGSCGPARIEYA
	<b>TRTRPLEQKLISEEDLAANDILDYKDDDDKV</b>
Tag:	C-Myc/DDK
Predicted MW:	35.1
Concentration:	>0.05 µg/µL as determined by microplate BCA method
Purity:	> 80% as determined by SDS-PAGE and Coomassie blue staining
Buffer:	25 mM Tris-HCl, 100 mM glycine, pH 7.3, 10% glycerol
Preparation:	Recombinant protein was captured through anti-DDK affinity column followed by conventional chromatography steps.
Note:	For testing in cell culture applications, please filter before use. Note that you may experience some loss of protein during the filtration process.
Storage:	Store at -80°C.
Stability:	Stable for 12 months from the date of receipt of the product under proper storage and handling conditions. Avoid repeated freeze-thaw cycles.
RefSeq:	<a href="#">NP_644672</a>
Locus ID:	56910



[View online »](#)

UniProt ID:	<a href="#">Q9NQZ5</a>
RefSeq Size:	3175
Cytogenetics:	2q11.2
RefSeq ORF:	885
Synonyms:	GTT1; StAR-related lipid transfer (START) domain containing 7; START domain containing 7
Summary:	May play a protective role in mucosal tissues by preventing exaggerated allergic responses. [UniProtKB/Swiss-Prot Function]

### Product images:



Coomassie blue staining of purified STARD7 protein (Cat# [TP303423]). The protein was produced from HEK293T cells transfected with STARD7 cDNA clone (Cat# [RC203423]) using MegaTran 2.0 (Cat# [TT210002]).