

## Product datasheet for TP303420M

### Tuftelin 1 (TUFT1) (NM\_020127) Human Recombinant Protein

#### Product data:

Product Type:	Recombinant Proteins
Description:	Recombinant protein of human tuftelin 1 (TUFT1), transcript variant 1, 100 µg
Species:	Human
Expression Host:	HEK293T
Expression cDNA Clone or AA Sequence:	>RC203420 protein sequence <b>Red</b> =Cloning site <b>Green</b> =Tags(s)
	MNGTRNWCTLVDVHPEDQAAGSVDILRLTLQGELTGDELEHIAQKAGRKTYAMVSSHSAGHSLASELVES HDGHEEIIKVYLKGRSGDKMIHEKNINQLKSEVQYIQEARNCLQKLREDISSKLDLDRNLGDSLHRQEIQVV LEKPNGFSQSPTALYSSPPEVDTCINEDVESLRKTVQDLLAKLQEAQRHQSDCVAFEVTLSTRYQREAEQ SNVALQREEDRVEQKEAEVGELQRRLLGMETEHQALLAKVREGEVALEELRSNNADCQAEREKAATLEKE VAGLREKIHHLDDMLKSQQRKVRQMIEQLQNSKAVIQSKDATIQELKEKIAYLEAENLEMHDRMEHLIEK QISHGNFSTQARAKTENPGSIRISKPPSPKMPVIRVVET
	<b>TR</b> TRPLEQKLISEEDLAANDILDYKDDDDKV
Tag:	C-Myc/DDK
Predicted MW:	44.1 kDa
Concentration:	>0.05 µg/µL as determined by microplate BCA method
Purity:	> 80% as determined by SDS-PAGE and Coomassie blue staining
Buffer:	25 mM Tris-HCl, 100 mM glycine, pH 7.3, 10% glycerol
Preparation:	Recombinant protein was captured through anti-DDK affinity column followed by conventional chromatography steps.
Note:	For testing in cell culture applications, please filter before use. Note that you may experience some loss of protein during the filtration process.
Storage:	Store at -80°C.
Stability:	Stable for 12 months from the date of receipt of the product under proper storage and handling conditions. Avoid repeated freeze-thaw cycles.
RefSeq:	<a href="#">NP_064512</a>
Locus ID:	7286



[View online »](#)

UniProt ID: [Q9NNX1](#)

RefSeq Size: 3127

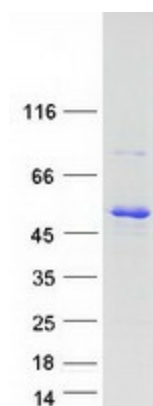
Cytogenetics: 1q21.3

RefSeq ORF: 1170

**Summary:** Tuftelin is an acidic protein that is thought to play a role in dental enamel mineralization and is implicated in caries susceptibility. It is also thought to be involved with adaptation to hypoxia, mesenchymal stem cell function, and neurotrophin nerve growth factor mediated neuronal differentiation. [provided by RefSeq, Aug 2014]

**Protein Families:** Secreted Protein

### Product images:



Coomassie blue staining of purified TUFT1 protein (Cat# [TP303420]). The protein was produced from HEK293T cells transfected with TUFT1 cDNA clone (Cat# [RC203420]) using MegaTran 2.0 (Cat# [TT210002]).