

## Product datasheet for **TP303413**

### **RAB25 (NM\_020387) Human Recombinant Protein**

#### Product data:

Product Type: Recombinant Proteins

Description: Recombinant protein of human RAB25, member RAS oncogene family (RAB25), 20 µg

Species: Human

Expression Host: HEK293T

Expression cDNA Clone  
or AA Sequence: >RC203413 protein sequence  
**Red**=Cloning site **Green**=Tags(s)

MGNGTEEDYNFVKWVLIGESGVGKTNLLSRFTRNEFSHDSRTTIGVEFSTRVMLGTA AVKAQIWDTAG  
LERYRAITSAYYRGAVGALLVFDLTKHQTYAWVERWLKELYDHAEATIVMLVGNKSDL SQAREVPTEEA  
RMFAENGLLLFLETSALDSTNVELAFETVLKEIFAKVSKQRQNSIRTNAILGSAQAGQEPGPGEKRACC  
ISL

**TRTRPLEQKLISEEDLAANDILDYKDDDDKV**

Tag: C-Myc/DDK

Predicted MW: 23.3 kDa

Concentration: >0.05 µg/µL as determined by microplate BCA method

Purity: > 80% as determined by SDS-PAGE and Coomassie blue staining

Buffer: 25 mM Tris-HCl, 100 mM glycine, pH 7.3, 10% glycerol

Preparation: Recombinant protein was captured through anti-DDK affinity column followed by conventional chromatography steps.

Note: For testing in cell culture applications, please filter before use. Note that you may experience some loss of protein during the filtration process.

Storage: Store at -80°C.

Stability: Stable for 12 months from the date of receipt of the product under proper storage and handling conditions. Avoid repeated freeze-thaw cycles.

RefSeq: [NP\\_065120](#)

Locus ID: 57111

UniProt ID: [P57735](#)



[View online »](#)

RefSeq Size: 1101

Cytogenetics: 1q22

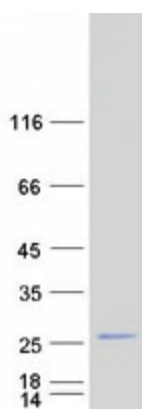
RefSeq ORF: 639

Synonyms: CATX-8; RAB11C

**Summary:** The protein encoded by this gene is a member of the RAS superfamily of small GTPases. The encoded protein is involved in membrane trafficking and cell survival. This gene has been found to be a tumor suppressor and an oncogene, depending on the context. Two variants, one protein-coding and the other not, have been found for this gene. [provided by RefSeq, Nov 2015]

**Protein Families:** Druggable Genome, Transcription Factors

### Product images:



Coomassie blue staining of purified RAB25 protein (Cat# TP303413). The protein was produced from HEK293T cells transfected with RAB25 cDNA clone (Cat# [RC203413]) using MegaTran 2.0 (Cat# [TT210002]).