

Product datasheet for TP303408M

CTDSP1 (NM_182642) Human Recombinant Protein

Product data:

Product Type:	Recombinant Proteins
Description:	Recombinant protein of human CTD (carboxy-terminal domain, RNA polymerase II, polypeptide A) small phosphatase 1 (CTDSP1), transcript variant 2, 100 µg
Species:	Human
Expression Host:	HEK293T
Expression cDNA Clone or AA Sequence:	>RC203408 protein sequence Red =Cloning site Green =Tags(s)
	MDSSAVITQISKEEARGPLRGKGDQKSAASQKPRSRGILHSLFCCVCRDDGEALPAHSGAPLLVEENGAI PKQTPVQYLLPEAKAQDSKICVVIDLDELTVHSSFKPVNNADFIIPVEIDGVVHQVYVLRPHVDFLQ RMGELFECVLFTASLAKYADPVADLLDKWGAFRARLFRESCVFHRGNVYKDL SRLGRDLRRVLILDNSPA SYVFHPDNAVPVASWFDNMSDELHDL LPPFEQLSRVDDVYSVLRQPRPGS
	TRTRPLEQKLISEEDLAANDILDYKDDDDKV
Tag:	C-Myc/DDK
Predicted MW:	28.9 kDa
Concentration:	>0.05 µg/µL as determined by microplate BCA method
Purity:	> 80% as determined by SDS-PAGE and Coomassie blue staining
Buffer:	25 mM Tris-HCl, 100 mM glycine, pH 7.3, 10% glycerol
Preparation:	Recombinant protein was captured through anti-DDK affinity column followed by conventional chromatography steps.
Note:	For testing in cell culture applications, please filter before use. Note that you may experience some loss of protein during the filtration process.
Storage:	Store at -80°C.
Stability:	Stable for 12 months from the date of receipt of the product under proper storage and handling conditions. Avoid repeated freeze-thaw cycles.
RefSeq:	<u>NP_872580</u>
Locus ID:	58190



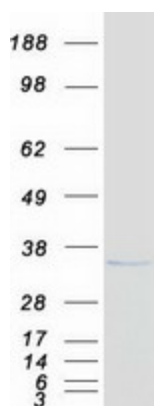
[View online »](#)

UniProt ID: [Q9GZU7](#)
RefSeq Size: 2652
Cytogenetics: 2q35
RefSeq ORF: 783
Synonyms: NIF3; NLI-IF; NLIIF; SCP1

Summary: This gene encodes a member of the small C-terminal domain phosphatase (SCP) family of nuclear phosphatases. These proteins play a role in transcriptional regulation through specific dephosphorylation of phosphoserine 5 within tandem heptapeptide repeats of the C-terminal domain of RNA polymerase II. The encoded protein plays a role in neuronal gene silencing in non-neuronal cells, and may also inhibit osteoblast differentiation. Alternatively spliced transcript variants encoding multiple isoforms have been observed for this gene. [provided by RefSeq, Oct 2011]

Protein Families: Phosphatase

Product images:



Coomassie blue staining of purified CTDSP1 protein (Cat# [TP303408]). The protein was produced from HEK293T cells transfected with CTDSP1 cDNA clone (Cat# [RC203408]) using MegaTran 2.0 (Cat# [TT210002]).