

## Product datasheet for **TP303401L**

### **GAL3ST4 (NM\_024637) Human Recombinant Protein**

#### Product data:

**Product Type:** Recombinant Proteins

**Description:** Recombinant protein of human galactose-3-O-sulfotransferase 4 (GAL3ST4), 1 mg

**Species:** Human

**Expression Host:** HEK293T

**Expression cDNA Clone  
or AA Sequence:** >RC203401 protein sequence  
**Red**=Cloning site **Green**=Tags(s)

MGPLSPARTLRLWGPRSLGVALGVFMTIGFALQLLGGPFQRRPLGLQLRQPSAPSLRPALPSCPPRQRLV  
FLKTHKSGSSSVLSLLHRYGDQHGLRFALPARYQFGYPKLFQASRVKGYRPOGGGTQLPFHILCHHMRFN  
LKEVLQVMPSDSFFFSIVRDPAAALARSAFSYYKSTSSAFRKSPSLAAFLANPRGFYRPGARGDHYARNLL  
WFDFGLPFPPEKRAKRGNIHPPRDPNPPQLQVLPSGAGPRAQTLNPNALIHVPSTVTDHRSQISSPASFD  
LGSSSFIQWGLAWLDSVFDLVMVAEYFDESLVLLADALCWGLDDVWVGMHNAQAGHKQGLSTVSNSGLTA  
EDRQLTARARAWNLDWALYVHFNRSLWARIEKYQGRLQTAVAELRARREALAKHCLVGGGEASDPKYIT  
DRRFRPFQFGSAKVLGYILRSGLSPLDQEECERLATPELQYKDKLDVKQFPPTVSLPLKTSRPLSP

**TRTRPLEQKLISEEDLAANDILDYKDDDDKV**

**Tag:** C-Myc/DDK

**Predicted MW:** 54 kDa

**Concentration:** >0.05 µg/µL as determined by microplate BCA method

**Purity:** > 80% as determined by SDS-PAGE and Coomassie blue staining

**Buffer:** 25 mM Tris-HCl, 100 mM glycine, pH 7.3, 10% glycerol

**Preparation:** Recombinant protein was captured through anti-DDK affinity column followed by conventional chromatography steps.

**Note:** For testing in cell culture applications, please filter before use. Note that you may experience some loss of protein during the filtration process.

**Storage:** Store at -80°C.

**Stability:** Stable for 12 months from the date of receipt of the product under proper storage and handling conditions. Avoid repeated freeze-thaw cycles.

**RefSeq:** [NP\\_078913](#)



[View online »](#)

Locus ID: 79690

UniProt ID: [Q96RP7](#)

RefSeq Size: 2561

Cytogenetics: 7q22.1

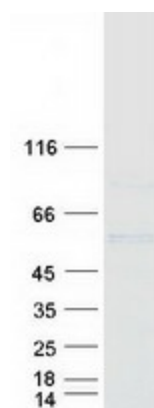
RefSeq ORF: 1458

Synonyms: GAL3ST-4

**Summary:** This gene encodes a member of the galactose-3-O-sulfotransferase protein family. The product of this gene catalyzes sulfonation by transferring a sulfate to the C-3' position of galactose residues in O-linked glycoproteins. This enzyme is highly specific for core 1 structures, with asialofetuin, Gal-beta-1,3-GalNAc and Gal-beta-1,3 (GlcNAc-beta-1,6)GalNAc being good substrates. [provided by RefSeq, Jul 2008]

**Protein Families:** Transmembrane

### Product images:



Coomassie blue staining of purified GAL3ST4 protein (Cat# [TP303401]). The protein was produced from HEK293T cells transfected with GAL3ST4 cDNA clone (Cat# [RC203401]) using MegaTran 2.0 (Cat# [TT210002]).