

## Product datasheet for **TP303397L**

### Lin28 (LIN28A) (NM\_024674) Human Recombinant Protein

#### Product data:

**Product Type:** Recombinant Proteins

**Description:** Purified recombinant protein of Homo sapiens lin-28 homolog (LIN28), 1 mg

**Species:** Human

**Expression Host:** HEK293T

**Expression cDNA Clone** >RC203397 protein sequence

**or AA Sequence:** **Red**=Cloning site **Green**=Tags(s)

MGSVSNQQFAGGCAKAAEEAPEEAPEDAARAADEPQLLHGAGICKWFNVRMGGFGLSMTARAGVALDPPV  
DVFVHQSKLHMEGFRSLKEGEAVEFTFKKSAKGLSIRVTGPGGVFCIGSERRPKGKSMQKRRSKGDRCY  
NCGGLDHHAKECKLPPQPKKCHFCQSISHMVASCPLKAQQGPSAQGKPTYFREEEEEIHSPDLLPEAQN

**TRTRPLEQKLISEEDLAANDILDYKDDDDKV**

**Tag:** C-Myc/DDK

**Predicted MW:** 22.6 kDa

**Concentration:** >0.05 µg/µL as determined by microplate BCA method

**Purity:** > 80% as determined by SDS-PAGE and Coomassie blue staining

**Buffer:** 25 mM Tris-HCl, 100 mM glycine, pH 7.3, 10% glycerol

**Preparation:** Recombinant protein was captured through anti-DDK affinity column followed by conventional chromatography steps.

**Note:** For testing in cell culture applications, please filter before use. Note that you may experience some loss of protein during the filtration process.

**Storage:** Store at -80°C.

**Stability:** Stable for 12 months from the date of receipt of the product under proper storage and handling conditions. Avoid repeated freeze-thaw cycles.

**RefSeq:** [NP\\_078950](#)

**Locus ID:** 79727

**UniProt ID:** [Q9H9Z2](#)

**RefSeq Size:** 4014



[View online »](#)

Cytogenetics: 1p36.11

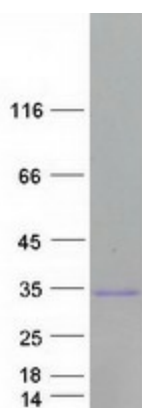
RefSeq ORF: 627

Synonyms: CSDD1; LIN-28; lin-28A; LIN28; ZCCHC1

**Summary:** This gene encodes a LIN-28 family RNA-binding protein that acts as a posttranscriptional regulator of genes involved in developmental timing and self-renewal in embryonic stem cells. The encoded protein functions through direct interaction with target mRNAs and by disrupting the maturation of certain miRNAs involved in embryonic development. This protein prevents the terminal processing of the LET7 family of microRNAs which are major regulators of cellular growth and differentiation. Aberrant expression of this gene is associated with cancer progression in multiple tissues. [provided by RefSeq, Sep 2015]

**Protein Families:** Transcription Factors

### Product images:



Coomassie blue staining of purified LIN28A protein (Cat# [TP303397]). The protein was produced from HEK293T cells transfected with LIN28A cDNA clone (Cat# [RC203397]) using MegaTran 2.0 (Cat# [TT210002]).