

Product datasheet for **TP303394M**

CAB39L (NM_030925) Human Recombinant Protein

Product data:

| | |
|---------------------------------------|---|
| Product Type: | Recombinant Proteins |
| Description: | Recombinant protein of human calcium binding protein 39-like (CAB39L), transcript variant 1, 100 µg |
| Species: | Human |
| Expression Host: | HEK293T |
| Expression cDNA Clone or AA Sequence: | >RC203394 protein sequence Red =Cloning site Green =Tags(s) |

MKKMPLFSKSHKNPAEIVKILKDNLAILEKQDKKTDKASEEVSKSLQAMKEILCGTNEKEPPTTEAVAQLA
QELYSSGLLVTLIADLQLIDFEEKKDVTQIFNNILRRQIGTRSPTVEYISAHPHILFMLLKGYEAPQIAL
RCGIMLRECIRHEPLAKIILFSNQFRDFFKYVELSTFDIASDAFATFKDLLTRHKVLVADFLEQNYDTIF
EDYEKLLQSENYVTKRQSLKLLGELILDRHNFAIMTKYISKPENLKLMMNLLRDKSPNIQFEAFHVFKVF
VASPHKTQPIVEILLKNQPKLIEFLSSFQKERTDDEQFADEKNYLIKQIRDLKKTAP

TRTRPLEQKLISEEDLAANDILDYKDDDDKV

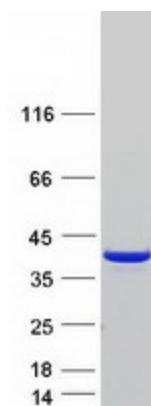
| | |
|----------------|--|
| Tag: | C-Myc/DDK |
| Predicted MW: | 38.9 kDa |
| Concentration: | >0.05 µg/µL as determined by microplate BCA method |
| Purity: | > 80% as determined by SDS-PAGE and Coomassie blue staining |
| Buffer: | 25 mM Tris-HCl, 100 mM glycine, pH 7.3, 10% glycerol |
| Preparation: | Recombinant protein was captured through anti-DDK affinity column followed by conventional chromatography steps. |
| Note: | For testing in cell culture applications, please filter before use. Note that you may experience some loss of protein during the filtration process. |
| Storage: | Store at -80°C. |
| Stability: | Stable for 12 months from the date of receipt of the product under proper storage and handling conditions. Avoid repeated freeze-thaw cycles. |
| RefSeq: | <u>NP_112187</u> |
| Locus ID: | 81617 |



[View online »](#)

| | |
|-------------------|--|
| UniProt ID: | <u>Q9H9S4</u> , <u>A0A024RDT3</u> , <u>Q86WE6</u> |
| RefSeq Size: | 3631 |
| Cytogenetics: | 13q14.2 |
| RefSeq ORF: | 1011 |
| Synonyms: | bA103J18.3; MO2L; MO25-BETA |
| Summary: | Component of a complex that binds and activates STK11/LKB1. In the complex, required to stabilize the interaction between CAB39/MO25 (CAB39/MO25alpha or CAB39L/MO25beta) and STK11/LKB1 (By similarity).[UniProtKB/Swiss-Prot Function] |
| Protein Pathways: | mTOR signaling pathway |

Product images:



Coomassie blue staining of purified CAB39L protein (Cat# [TP303394]). The protein was produced from HEK293T cells transfected with CAB39L cDNA clone (Cat# [RC203394]) using MegaTran 2.0 (Cat# [TT210002]).