

Product datasheet for **TP303392M**

CHODL (NM_024944) Human Recombinant Protein

Product data:

Product Type:	Recombinant Proteins
Description:	Recombinant protein of human chondrolectin (CHODL), 100 µg
Species:	Human
Expression Host:	HEK293T
Expression cDNA	>RC203392 protein sequence
Clone or AA Sequence:	Red=Cloning site Green=Tags(s)

MSRVVSLLLGAALLCGHGAFRRVSGQKVCFADFKHPCYKMAYFHELSSRVSFQEARLACESEGGVLLS
LENEAEQKLIESMLQNLTKPGTGISDGDGFWIGLWRNGDGTSGACPDLYQWSDGSNSQYRNWYTDEPSCG
SEKCVWYHQPTANPGLGGPYLYQWDDRCNMKHNYICKYEPEINPTAPVEKPYLTNQPGDTHQNVVWTE
AGIIPNLIYVVIPTIPLLLLILVAFGTCCFQMLHKSkgRtKtSPNQSTLWISKSTRKESGMEV

TRTRPLEQKLISEEDLAANDILDYKDDDDKV

Tag:	C-Myc/DDK
Predicted MW:	28.3 kDa
Concentration:	>0.05 µg/µL as determined by microplate BCA method
Purity:	> 80% as determined by SDS-PAGE and Coomassie blue staining
Buffer:	25 mM Tris-HCl, 100 mM glycine, pH 7.3, 10% glycerol
Preparation:	Recombinant protein was captured through anti-DDK affinity column followed by conventional chromatography steps.
Note:	For testing in cell culture applications, please filter before use. Note that you may experience some loss of protein during the filtration process.
Storage:	Store at -80°C.
Stability:	Stable for 12 months from the date of receipt of the product under proper storage and handling conditions. Avoid repeated freeze-thaw cycles.
RefSeq:	<u>NP_079220</u>
Locus ID:	140578
UniProt ID:	<u>Q9H9P2</u>



[View online »](#)

RefSeq Size: 2625

Cytogenetics: 21q21.1

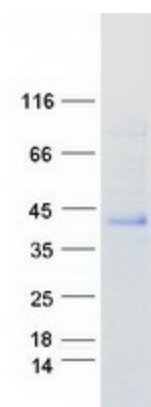
RefSeq ORF: 819

Synonyms: C21orf68; MT75; PRED12

Summary: This gene encodes a type I membrane protein with a carbohydrate recognition domain characteristic of C-type lectins in its extracellular portion. In other proteins, this domain is involved in endocytosis of glycoproteins and exogenous sugar-bearing pathogens. This protein localizes predominantly to the perinuclear region. Several transcript variants encoding a few different isoforms have been found for this gene. [provided by RefSeq, Feb 2011]

Protein Families: Transmembrane

Product images:



Coomassie blue staining of purified CHODL protein (Cat# [TP303392]). The protein was produced from HEK293T cells transfected with CHODL cDNA clone (Cat# [RC203392]) using MegaTran 2.0 (Cat# [TT210002]).