

## Product datasheet for TP303371

### RTL10 (NM\_024627) Human Recombinant Protein

#### Product data:

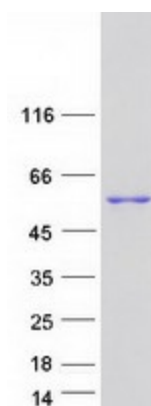
Product Type:	Recombinant Proteins
Description:	Recombinant protein of human chromosome 22 open reading frame 29 (C22orf29), 20 µg
Species:	Human
Expression Host:	HEK293T
Expression cDNA Clone or AA Sequence:	>RC203371 protein sequence <b>Red</b> =Cloning site <b>Green</b> =Tags(s)
	<p>MPRGRCRQQGPRIWAAANYANAHPWQQMDKASPGVAYTPLVDPWIERPCCGDTVCRVTTMEQKSTASG TCGGKPAERGPLAGHMPSSRPHRVDFCWVPGSDPGTFDGPWLLDRFLAQLGDYMSFHFHEYQDNISRVC EILRRLTGRAQAWAAPYLDGDLPLPDDYELFCQDLKEVVQDPNSFAEYHAVTCLPLASSQLPVAPQLP VVRQYLARFLEGLALDMGTAPRSLPAAMATPAVSGSNSVRSALFEQQLTKESTPGPKPEPPVLPSTCSS KPGPVEPASSQPEEAAPTVPRLSESANPPAQRDPAPHPGGPKPKQKTEEEVLETEGDQEVSLGTPQEVVE APETPGEPLSPGF</p> <p><b>TRTRPLEQKLISEEDLAANDILDYKDDDDKV</b></p>
Tag:	C-Myc/DDK
Predicted MW:	39.1 kDa
Concentration:	>0.05 µg/µL as determined by microplate BCA method
Purity:	> 80% as determined by SDS-PAGE and Coomassie blue staining
Buffer:	25 mM Tris-HCl, 100 mM glycine, pH 7.3, 10% glycerol
Preparation:	Recombinant protein was captured through anti-DDK affinity column followed by conventional chromatography steps.
Note:	For testing in cell culture applications, please filter before use. Note that you may experience some loss of protein during the filtration process.
Storage:	Store at -80°C.
Stability:	Stable for 12 months from the date of receipt of the product under proper storage and handling conditions. Avoid repeated freeze-thaw cycles.
RefSeq:	<a href="#">NP_078903</a>
Locus ID:	79680



[View online »](#)

UniProt ID:	<a href="#">Q7L3V2</a>
RefSeq Size:	6693
Cytogenetics:	22q11.21
RefSeq ORF:	1092
Synonyms:	BOP; C22orf29
Summary:	Could induce apoptosis in a BH3 domain-dependent manner. The direct interaction network of Bcl-2 family members may play a key role in modulation RTL10/BOP intrinsic apoptotic signaling activity.[UniProtKB/Swiss-Prot Function]

### Product images:



Coomassie blue staining of purified RTL10 protein (Cat# TP303371). The protein was produced from HEK293T cells transfected with RTL10 cDNA clone (Cat# [RC203371]) using MegaTran 2.0 (Cat# [TT210002]).