

## Product datasheet for TP303370

### DEM1 (EXO5) (NM\_022774) Human Recombinant Protein

#### Product data:

Product Type:	Recombinant Proteins
Description:	Recombinant protein of human defects in morphology 1 homolog ( <i>S. cerevisiae</i> ) (DEM1), 20 µg
Species:	Human
Expression Host:	HEK293T
Expression cDNA Clone or AA Sequence:	>RC203370 protein sequence Red=Cloning site Green=Tags(s)

MAETREEETVSAEASGFSDLSDFLEFLDLEDAQESKALVNMPGPSSSESLGKDDKPISLQNWKRGLDIL  
SPMERFHLKYLVTDLATQNWCELQTAYGKELPGFLAPEKAAVLDTGASIHARELELHDLVTPVTTKE  
DAWAIKFLNILLIPTLQSEGHIREFPVFGEVEGVLLVGVDELHYTAKGELELAELKTRRRPMLPLEAQ  
KKKDCFQVSLYKYIFDAMVQGVTPASLIHHTKLCLEKPLGPSVLRHAQQGGFSVKSLGDLMELVFLSLT  
LSDLPVIDILKIEYIHQETATVLTGTEIVAFKEKEVRRAKVQHMYMAYWMGHREPQGVDFVEEAWKCRTCTYAD  
ICEWRKGGVLSSTLAPQVKKAK

TRTRPLEQKLISEEDLAANDILDYKDDDDKV

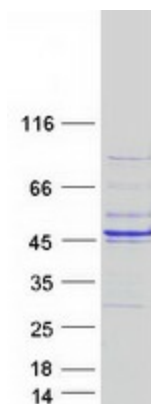
Tag:	C-Myc/DDK
Predicted MW:	41.6 kDa
Concentration:	>0.05 µg/µL as determined by microplate BCA method
Purity:	> 80% as determined by SDS-PAGE and Coomassie blue staining
Buffer:	25 mM Tris-HCl, 100 mM glycine, pH 7.3, 10% glycerol
Preparation:	Recombinant protein was captured through anti-DDK affinity column followed by conventional chromatography steps.
Note:	For testing in cell culture applications, please filter before use. Note that you may experience some loss of protein during the filtration process.
Storage:	Store at -80°C.
Stability:	Stable for 12 months from the date of receipt of the product under proper storage and handling conditions. Avoid repeated freeze-thaw cycles.
RefSeq:	<a href="#">NP_073611</a>
Locus ID:	64789



[View online »](#)

UniProt ID:	<a href="#">Q9H790</a>
RefSeq Size:	2217
Cytogenetics:	1p34.2
RefSeq ORF:	1119
Synonyms:	C1orf176; DEM1; Exo V; hExo5
Summary:	The protein encoded by this gene is a single-stranded DNA (ssDNA)-specific exonuclease that can slide along the DNA before cutting it. However, human replication protein A binds ssDNA and restricts sliding of the encoded protein, providing a 5'-directionality to the enzyme. This protein localizes to nuclear repair loci after DNA damage. [provided by RefSeq, Nov 2016]

### Product images:



Coomassie blue staining of purified EXO5 protein (Cat# TP303370). The protein was produced from HEK293T cells transfected with EXO5 cDNA clone (Cat# [RC203370]) using MegaTran 2.0 (Cat# [TT210002]).