

Product datasheet for **TP303362L**

ASAM (CLMP) (NM_024769) Human Recombinant Protein

Product data:

Product Type:	Recombinant Proteins
Description:	Recombinant protein of human adipocyte-specific adhesion molecule (ASAM), 1 mg
Species:	Human
Expression Host:	HEK293T
Expression cDNA Clone or AA Sequence:	>RC203362 protein sequence Red =Cloning site Green =Tags(s)
	<p>MSLLLLLLLLVSYVGTGLGHTHEIKRVAEEKVTLPCHHQLGLPEKDTLDIEWLLTDNEGNQKVITYSSRH VYNNLTEEQKGRVAFASNFLAGDASLQIEPLKPSDEGRYTCKVKNSGRYVWSHVILKVLVRPSKPKCELE GELTEGSDLTQCESSGTEPIVYYWQRIREKEGEDERLPPKSRIDYNHPGRVLLQNLTMSYSGLYQCTA GNEAGKESCVRVTQYVQSIGMVAGAVTGIVAGALLIFLLVWLLIRRKDKERYEEEEERPNEIREDAEAP KARLVKPSSSSSGSRSSRSSSSTRSTANSASRSQRTLSTDAAPQPGLATQAYSLVGPEVRGSEPKKVHH ANLTKAETTPSMIPSQSRAFQTV</p> <p>TRTRPLEQKLISEEDLAANDILDYKDDDDKV</p>
Tag:	C-Myc/DDK
Predicted MW:	41.1 kDa
Concentration:	>0.05 µg/µL as determined by microplate BCA method
Purity:	> 80% as determined by SDS-PAGE and Coomassie blue staining
Buffer:	25 mM Tris-HCl, 100 mM glycine, pH 7.3, 10% glycerol
Preparation:	Recombinant protein was captured through anti-DDK affinity column followed by conventional chromatography steps.
Note:	For testing in cell culture applications, please filter before use. Note that you may experience some loss of protein during the filtration process.
Storage:	Store at -80°C.
Stability:	Stable for 12 months from the date of receipt of the product under proper storage and handling conditions. Avoid repeated freeze-thaw cycles.
RefSeq:	NP_079045
Locus ID:	79827



[View online »](#)

UniProt ID: [Q9H6B4](#), [B4E3S3](#)

RefSeq Size: 2645

Cytogenetics: 11q24.1

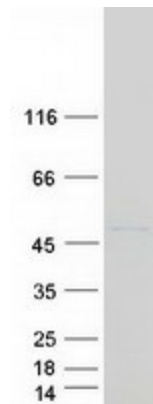
RefSeq ORF: 1119

Synonyms: ACAM; ASAM; CSBM; CSBS

Summary: This gene encodes a type I transmembrane protein that is localized to junctional complexes between endothelial and epithelial cells and may have a role in cell-cell adhesion. Expression of this gene in white adipose tissue is implicated in adipocyte maturation and development of obesity. This gene is also essential for normal intestinal development and mutations in the gene are associated with congenital short bowel syndrome. [provided by RefSeq, Aug 2015]

Protein Families: Transmembrane

Product images:



Coomassie blue staining of purified CLMP protein (Cat# [TP303362]). The protein was produced from HEK293T cells transfected with CLMP cDNA clone (Cat# [RC203362]) using MegaTran 2.0 (Cat# [TT210002]).