

Product datasheet for **TP303341M**

LRRC39 (NM_144620) Human Recombinant Protein

Product data:

Product Type:	Recombinant Proteins
Description:	Recombinant protein of human leucine rich repeat containing 39 (LRRC39), 100 µg
Species:	Human
Expression Host:	HEK293T
Expression cDNA Clone or AA Sequence:	>RC203341 protein sequence Red =Cloning site Green =Tags(s)
	 MTENVVCTGAVNAVKEVWEKRIKLNEDLKREKEFQHKLVRIVEERVSLTKLREKVTREDGRVILKIEKE EWKTLPSLLKLNQLQEWQLHRTGLLKIPEFIGRFQNLIVLDLSRNTISEIPPGIGLLTRLQELILSYNK IKTVPKELSNCASLEKLELAVNRDIDLQPQELSNLLKLTHLDLSMNDFTTIPLAVLNMPALEWLDMGSNK LEQLPDTIERMQNLHLLWLRNEITCLPQTISNMKNLGTLVLSNNKLQDIPVCMEEMANLRFVNFNDNPL KLKVSLLPSEGTDEEEERELFGLQFMHTYIQESRRRADHQVNGSTTLPISINTDG TRTRPLEQKLISEEDLAANDILDYKDDDDKV
Tag:	C-Myc/DDK
Predicted MW:	38.6 kDa
Concentration:	>0.05 µg/µL as determined by microplate BCA method
Purity:	> 80% as determined by SDS-PAGE and Coomassie blue staining
Buffer:	25 mM Tris-HCl, 100 mM glycine, pH 7.3, 10% glycerol
Preparation:	Recombinant protein was captured through anti-DDK affinity column followed by conventional chromatography steps.
Note:	For testing in cell culture applications, please filter before use. Note that you may experience some loss of protein during the filtration process.
Storage:	Store at -80°C.
Stability:	Stable for 12 months from the date of receipt of the product under proper storage and handling conditions. Avoid repeated freeze-thaw cycles.
RefSeq:	<u>NP_653221</u>
Locus ID:	127495



[View online »](#)

UniProt ID: [Q96DD0](#)

RefSeq Size: 1865

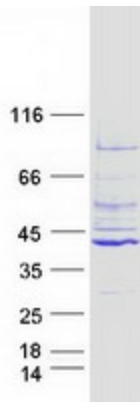
Cytogenetics: 1p21.2

RefSeq ORF: 1005

Summary: Component of the sarcomeric M-band which plays a role in myocyte response to biomechanical stress. May regulate expression of other M-band proteins via an SRF-dependent pathway. Important for normal contractile function in heart.[UniProtKB/Swiss-Prot Function]

Protein Families: Druggable Genome

Product images:



Coomassie blue staining of purified LRRC39 protein (Cat# [TP303341]). The protein was produced from HEK293T cells transfected with LRRC39 cDNA clone (Cat# [RC203341]) using MegaTran 2.0 (Cat# [TT210002]).