

Product datasheet for **TP303341L**

LRRC39 (NM_144620) Human Recombinant Protein

Product data:

Product Type: Recombinant Proteins

Description: Recombinant protein of human leucine rich repeat containing 39 (LRRC39), 1 mg

Species: Human

Expression Host: HEK293T

**Expression cDNA Clone
or AA Sequence:** >RC203341 protein sequence
Red=Cloning site **Green**=Tags(s)

MTENVVCTGAVNAVKEVWEKRIKLNEDLKREKEFQHKLVRIVEERVSLTKLREKVTREDGRVILKIEKE
EWKTLPSSLLKLNQLQEWQLHRTGLLKIPEFIGRFQNLIVLDLSRNTISEIPPGIGLLTRLQELILSYNK
IKTVPKELSNCASLEKLELAVNRDIDLPQELSNLLKLTHLDLSMNDFTTIPLAVLNMPALEWLDMGSNK
LEQLPDTIERMQNLHLLWLRNEITCLPQTISNMKNLGTLVLSNNKLQDIPVCMEEMANLRFVNFNDNPL
KLKVSLLPSEGTDEEEERELFGLQFMHTYIQESRRRADHQVNGSTTLPISINTDG

TRTRPLEQKLISEEDLAANDILDYKDDDDKV

Tag: C-Myc/DDK

Predicted MW: 38.6 kDa

Concentration: >0.05 µg/µL as determined by microplate BCA method

Purity: > 80% as determined by SDS-PAGE and Coomassie blue staining

Buffer: 25 mM Tris-HCl, 100 mM glycine, pH 7.3, 10% glycerol

Preparation: Recombinant protein was captured through anti-DDK affinity column followed by conventional chromatography steps.

Note: For testing in cell culture applications, please filter before use. Note that you may experience some loss of protein during the filtration process.

Storage: Store at -80°C.

Stability: Stable for 12 months from the date of receipt of the product under proper storage and handling conditions. Avoid repeated freeze-thaw cycles.

RefSeq: [NP_653221](#)

Locus ID: 127495



[View online »](#)

UniProt ID: [Q96DD0](#)

RefSeq Size: 1865

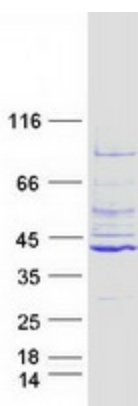
Cytogenetics: 1p21.2

RefSeq ORF: 1005

Summary: Component of the sarcomeric M-band which plays a role in myocyte response to biomechanical stress. May regulate expression of other M-band proteins via an SRF-dependent pathway. Important for normal contractile function in heart.[UniProtKB/Swiss-Prot Function]

Protein Families: Druggable Genome

Product images:



Coomassie blue staining of purified LRRC39 protein (Cat# [TP303341]). The protein was produced from HEK293T cells transfected with LRRC39 cDNA clone (Cat# [RC203341]) using MegaTran 2.0 (Cat# [TT210002]).