

Product datasheet for TP303338

Calpain S2 (CAPNS2) (NM_032330) Human Recombinant Protein

Product data:

Product Type:	Recombinant Proteins
Description:	Recombinant protein of human calpain, small subunit 2 (CAPNS2), 20 µg
Species:	Human
Expression Host:	HEK293T
Expression cDNA Clone or AA Sequence:	>RC203338 protein sequence Red =Cloning site Green =Tags(s) MFLAKALLEGADRGLGEALGGLFGGGGQRREGGGRNIGGIVGGIVNFISEAAAAQYTPPEPPTQQHFTSV EASESEEVRRFRQQFTQLAGPDMEVGATDLMNINLVLSKHKDLKTDGFSLDTCRSIVSVMDSDDTTGKLG FEEFKYLWNNIKKWQCVYKQYDRDHSGSLGSSQLRGALQAAGFQLNEQLYQMIVRRYANEDGDMDFN NFI SCLVRLDAMFRAFKSLDRDRDGLIQVSIKEWLQLTMYS TR TRPLEQKLISEEDLAANDILDYKDDDDKV
Tag:	C-Myc/DDK
Predicted MW:	27.5 kDa
Concentration:	>0.05 µg/µL as determined by microplate BCA method
Purity:	> 80% as determined by SDS-PAGE and Coomassie blue staining
Buffer:	25 mM Tris-HCl, 100 mM glycine, pH 7.3, 10% glycerol
Preparation:	Recombinant protein was captured through anti-DDK affinity column followed by conventional chromatography steps.
Note:	For testing in cell culture applications, please filter before use. Note that you may experience some loss of protein during the filtration process.
Storage:	Store at -80°C.
Stability:	Stable for 12 months from the date of receipt of the product under proper storage and handling conditions. Avoid repeated freeze-thaw cycles.
RefSeq:	<u>NP_115706</u>
Locus ID:	84290


[View online »](#)

UniProt ID: [Q96L46](#)

RefSeq Size: 1040

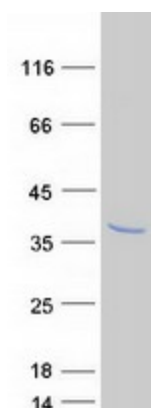
Cytogenetics: 16q12.2

RefSeq ORF: 744

Synonyms: CSS2

Summary: Calcium-regulated non-lysosomal thiol-protease which catalyzes limited proteolysis of substrates involved in cytoskeletal remodeling and signal transduction. This small subunit may act as a tissue-specific chaperone of the large subunit, possibly by helping it fold into its correct conformation for activity.[UniProtKB/Swiss-Prot Function]

Product images:



Coomassie blue staining of purified CAPNS2 protein (Cat# TP303338). The protein was produced from HEK293T cells transfected with CAPNS2 cDNA clone (Cat# [RC203338]) using MegaTran 2.0 (Cat# [TT210002]).