

Product datasheet for **TP303337M**

ZFYVE21 (NM_024071) Human Recombinant Protein

Product data:

Product Type: Recombinant Proteins

Description: Recombinant protein of human zinc finger, FYVE domain containing 21 (ZFYVE21), 100 µg

Species: Human

Expression Host: HEK293T

**Expression cDNA Clone
or AA Sequence:** >RC203337 protein sequence
Red=Cloning site **Green**=Tags(s)

MSSEVSARRDAKKLVRSPSGLRMVPEHRAFGSPFGLEEPQWVPDKECRRRCMQCDAKFDLTKHHCRRCG
KCFCDRCCSQKVP LRRMCFVDPVRQCAECALVSLKEAFYDKQLKVLLSGATFLVTFGNSEKPEPMTTCRL
SNNQRYLFLDGD SHYEIEIVHISTVQILTEGFPFGGNARATGMFLQYTVPGTEGVTQLKLTWVEDVTG
RRQAVAWLVAMHKA AKLLYESRDQ

TRTRPLEQKLISEEDLAANDILDYKDDDDKV

Tag: C-Myc/DDK

Predicted MW: 26.3 kDa

Concentration: >0.05 µg/µL as determined by microplate BCA method

Purity: > 80% as determined by SDS-PAGE and Coomassie blue staining

Buffer: 25 mM Tris-HCl, 100 mM glycine, pH 7.3, 10% glycerol

Preparation: Recombinant protein was captured through anti-DDK affinity column followed by conventional chromatography steps.

Note: For testing in cell culture applications, please filter before use. Note that you may experience some loss of protein during the filtration process.

Storage: Store at -80°C.

Stability: Stable for 12 months from the date of receipt of the product under proper storage and handling conditions. Avoid repeated freeze-thaw cycles.

RefSeq: [NP_076976](#)

Locus ID: 79038

UniProt ID: [Q9BQ24](#)



[View online »](#)

RefSeq Size: 1470

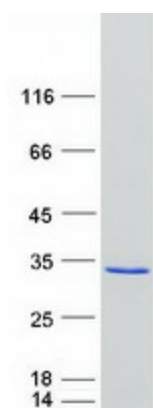
Cytogenetics: 14q32.33

RefSeq ORF: 702

Synonyms: HCVP7TP1; ZF21

Summary: Plays a role in cell adhesion, and thereby in cell motility which requires repeated formation and disassembly of focal adhesions. Regulates microtubule-induced PTK2/FAK1 dephosphorylation, an event important for focal adhesion disassembly, as well as integrin beta-1/ITGB1 cell surface expression.[UniProtKB/Swiss-Prot Function]

Product images:



Coomassie blue staining of purified ZFYVE21 protein (Cat# [TP303337]). The protein was produced from HEK293T cells transfected with ZFYVE21 cDNA clone (Cat# [RC203337]) using MegaTran 2.0 (Cat# [TT210002]).