

## Product datasheet for **TP30337L**

### ZFYVE21 (NM\_024071) Human Recombinant Protein

#### Product data:

**Product Type:** Recombinant Proteins

**Description:** Recombinant protein of human zinc finger, FYVE domain containing 21 (ZFYVE21), 1 mg

**Species:** Human

**Expression Host:** HEK293T

**Expression cDNA Clone  
or AA Sequence:** >RC203337 protein sequence  
**Red**=Cloning site **Green**=Tags(s)

MSSEVSARRDAKKLVRSPLRMVPEHRAFGSPFGLLEEQWVPDKECRRRCMQCDAKFDLTKHHCRRCG  
KCFCDRCCSQKVLRRMCFVDPVRQCAECALVSLKEAEFYDKQLKVLVSGATFLVTFGNSEKPEMTMTCRL  
SNNQRYLFLDGDShYEIEIVHISTVQILTEGFPPGGGNARATGMFLQYTVPGTEGVTQLKLTVEDVTVG  
RRQAVAWLVAMHKAACKLLYESRDQ

**TRTRPLEQKLISEEDLAANDILDYKDDDDKV**

**Tag:** C-Myc/DDK

**Predicted MW:** 26.3 kDa

**Concentration:** >0.05 µg/µL as determined by microplate BCA method

**Purity:** > 80% as determined by SDS-PAGE and Coomassie blue staining

**Buffer:** 25 mM Tris-HCl, 100 mM glycine, pH 7.3, 10% glycerol

**Preparation:** Recombinant protein was captured through anti-DDK affinity column followed by conventional chromatography steps.

**Note:** For testing in cell culture applications, please filter before use. Note that you may experience some loss of protein during the filtration process.

**Storage:** Store at -80°C.

**Stability:** Stable for 12 months from the date of receipt of the product under proper storage and handling conditions. Avoid repeated freeze-thaw cycles.

**RefSeq:** [NP\\_076976](#)

**Locus ID:** 79038

**UniProt ID:** [Q9BQ24](#)



[View online »](#)

RefSeq Size: 1470

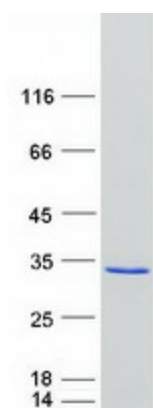
Cytogenetics: 14q32.33

RefSeq ORF: 702

Synonyms: HCVP7TP1; ZF21

**Summary:** Plays a role in cell adhesion, and thereby in cell motility which requires repeated formation and disassembly of focal adhesions. Regulates microtubule-induced PTK2/FAK1 dephosphorylation, an event important for focal adhesion disassembly, as well as integrin beta-1/ITGB1 cell surface expression.[UniProtKB/Swiss-Prot Function]

### Product images:



Coomassie blue staining of purified ZFYVE21 protein (Cat# [TP303337]). The protein was produced from HEK293T cells transfected with ZFYVE21 cDNA clone (Cat# [RC203337]) using MegaTran 2.0 (Cat# [TT210002]).