

Product datasheet for **TP303336**

SLD5 (GINS4) (NM_032336) Human Recombinant Protein

Product data:

Product Type:	Recombinant Proteins
Description:	Recombinant protein of human GINS complex subunit 4 (Sld5 homolog) (GINS4), 20 µg
Species:	Human
Expression Host:	HEK293T
Expression cDNA Clone or AA Sequence:	>RC203336 protein sequence Red =Cloning site Green =Tags(s)
	 MTEEVDFLGQSDSDGGSEEWLTPAELIERLEQAWMNEKFAPELLESKPEIVECVMEQLEHMEENLRRRAKR EDLKVSIHQMEMERIRYVLSYLRCRLMKIEKFFPHVLEKEKTRPEGEPSSLSPEELAFAREFMANTESY LKNVALKHMPPNLQKVDLFRVPPKPDLD SYVFLVRERQENILVEPDTDEQRDYVIDLEKGSQHLIRYKT IAPLVASGAVQLI TRTRPLEQKLISEEDLAANDILDYKDDDDKV
Tag:	C-Myc/DDK
Predicted MW:	25.9 kDa
Concentration:	>0.05 µg/µL as determined by microplate BCA method
Purity:	> 80% as determined by SDS-PAGE and Coomassie blue staining
Buffer:	25 mM Tris-HCl, 100 mM glycine, pH 7.3, 10% glycerol
Preparation:	Recombinant protein was captured through anti-DDK affinity column followed by conventional chromatography steps.
Note:	For testing in cell culture applications, please filter before use. Note that you may experience some loss of protein during the filtration process.
Storage:	Store at -80°C.
Stability:	Stable for 12 months from the date of receipt of the product under proper storage and handling conditions. Avoid repeated freeze-thaw cycles.
RefSeq:	NP_115712
Locus ID:	84296
UniProt ID:	Q9BRT9



[View online »](#)

RefSeq Size: 3841

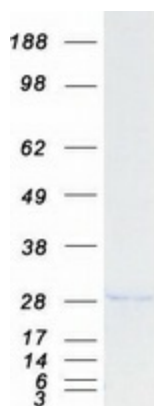
Cytogenetics: 8p11.21

RefSeq ORF: 669

Synonyms: SLD5

Summary: The yeast heterotetrameric GINS complex is made up of Sld5, Psf1 (GINS1; MIM 610608), Psf2 (GINS2; MIM 610609), and Psf3 (GINS3; MIM 610610). The formation of the GINS complex is essential for the initiation of DNA replication in yeast and *Xenopus* egg extracts (Ueno et al., 2005 [PubMed 16287864]). See GINS1 for additional information about the GINS complex. [supplied by OMIM, Mar 2008]

Product images:



Coomassie blue staining of purified GINS4 protein (Cat# TP303336). The protein was produced from HEK293T cells transfected with GINS4 cDNA clone (Cat# [RC203336]) using MegaTran 2.0 (Cat# [TT210002]).