

## Product datasheet for TP303332

### CAP2 (NM\_006366) Human Recombinant Protein

#### Product data:

Product Type:	Recombinant Proteins
Description:	Recombinant protein of human CAP, adenylate cyclase-associated protein, 2 (yeast) (CAP2), 20 µg
Species:	Human
Expression Host:	HEK293T
Expression cDNA Clone or AA Sequence:	>RC203332 protein sequence Red=Cloning site Green=Tags(s)

MANMQGLVERLERAVSRLESLSAESHRRPPGNCGEVNGVIAGVAPSVEAFDKLMDSMVAEFLKNSRILAGD  
VETHAEMVHSAFQAQRAFLLMASQYQQPHENDVAALLKPISEKIQEIQTFRERNRGSNMFNHL SAVSESI  
PALGWIAVSPKPGPYVKEMNDAATFYTNRVLKDYKHSDLRHVDWVKS YLNIWSELQAYIKEHHTTGLTWS  
KTGPVASTVS AFSVLSSG PGLPPPPPLPPPGPPPLFENEGKKEESSPSRSALFAQLNQGEAITKGLRHV  
TDDQKTYKNPSLRAQGGQTQSPTKSHTPSPTSPKSYPSQKHAPVLELEGKKWRVEYQEDRNDLVISETEL  
KQVAYIFKCEKSTIQIKGKVNSIIIDNCKKLGLVFDNVV GIVEVINSQDIQIQVMGRVPTISINKTEGCH  
IYLEDALDCEIVSAKSSEMNILIPQDGDYREFPIPEQFKTAWD GSKLITEPAEIMA

TRTRPLEQKLISEEDLAANDILDYKDDDDKV

Tag:	C-Myc/DDK
Predicted MW:	52.6 kDa
Concentration:	>0.05 µg/µL as determined by microplate BCA method
Purity:	> 80% as determined by SDS-PAGE and Coomassie blue staining
Buffer:	25 mM Tris-HCl, 100 mM glycine, pH 7.3, 10% glycerol
Preparation:	Recombinant protein was captured through anti-DDK affinity column followed by conventional chromatography steps.
Note:	For testing in cell culture applications, please filter before use. Note that you may experience some loss of protein during the filtration process.
Storage:	Store at -80°C.
Stability:	Stable for 12 months from the date of receipt of the product under proper storage and handling conditions. Avoid repeated freeze-thaw cycles.



[View online »](#)

RefSeq: [NP\\_006357](#)

Locus ID: 10486

UniProt ID: [P40123](#), [Q5JPI8](#)

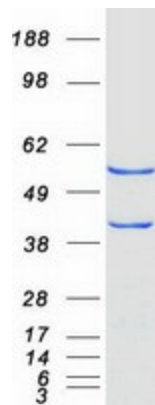
RefSeq Size: 3080

Cytogenetics: 6p22.3

RefSeq ORF: 1431

**Summary:** This gene was identified by its similarity to the gene for human adenylyl cyclase-associated protein. The function of the protein encoded by this gene is unknown. However, the protein appears to be able to interact with adenylyl cyclase-associated protein and actin. [provided by RefSeq, Jul 2008]

### Product images:



Coomassie blue staining of purified CAP2 protein (Cat# TP303332). The protein was produced from HEK293T cells transfected with CAP2 cDNA clone (Cat# [RC203332]) using MegaTran 2.0 (Cat# [TT210002]).