

Product datasheet for **TP303331M**

BAP29 (BCAP29) (NM_018844) Human Recombinant Protein

Product data:

Product Type:	Recombinant Proteins
Description:	Recombinant protein of human B-cell receptor-associated protein 29 (BCAP29), transcript variant 2, 100 µg
Species:	Human
Expression Host:	HEK293T
Expression cDNA Clone or AA Sequence:	>RC203331 protein sequence Red =Cloning site Green =Tags(s)
	 MTLQWAAVATFLYAEIGLILIFCLPFIPPQRWQKIFSFNVWGKIATFWNKAFLLIILLIVFLDAVREV RKYSSVHTIEKSSTSRPDAYEHTQMKLFRSQRNLYISGFSLFFWLVLRRRLVTLITQLAKELSNKGVLTQ AENTNKAACKFMEENEKLRILKSHGKDEECVLEAENKKLVEDQEKLKTELKTSALSQAQNDVMMEMKM QSERLSKEYDQLLKEHSELQDRLERGNKKRL TRTRPLEQKLISEEDLAANDILDYKDDDDKV
Tag:	C-Myc/DDK
Predicted MW:	28.1 kDa
Concentration:	>0.05 µg/µL as determined by microplate BCA method
Purity:	> 80% as determined by SDS-PAGE and Coomassie blue staining
Buffer:	25 mM Tris-HCl, 100 mM glycine, pH 7.3, 10% glycerol
Preparation:	Recombinant protein was captured through anti-DDK affinity column followed by conventional chromatography steps.
Note:	For testing in cell culture applications, please filter before use. Note that you may experience some loss of protein during the filtration process.
Storage:	Store at -80°C.
Stability:	Stable for 12 months from the date of receipt of the product under proper storage and handling conditions. Avoid repeated freeze-thaw cycles.
RefSeq:	NP_061332
Locus ID:	55973



[View online »](#)

UniProt ID: [Q9UHQ4](#), [E9PAI1](#)

RefSeq Size: 6034

Cytogenetics: 7q22.3

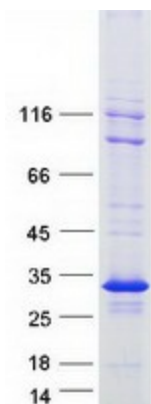
RefSeq ORF: 723

Synonyms: BAP29

Summary: May play a role in anterograde transport of membrane proteins from the endoplasmic reticulum to the Golgi. May be involved in CASP8-mediated apoptosis (By similarity).
[UniProtKB/Swiss-Prot Function]

Protein Families: Druggable Genome, Transmembrane

Product images:



Coomassie blue staining of purified BCAP29 protein (Cat# [TP303331]). The protein was produced from HEK293T cells transfected with BCAP29 cDNA clone (Cat# [RC203331]) using MegaTran 2.0 (Cat# [TT210002]).