

Product datasheet for TP303320

IFIT1 (NM_001548) Human Recombinant Protein

Product data:

Product Type:	Recombinant Proteins
Description:	Recombinant protein of human interferon-induced protein with tetratricopeptide repeats 1 (IFIT1), transcript variant 2, 20 µg
Species:	Human
Expression Host:	HEK293T
Expression cDNA Clone or AA Sequence:	>RC203320 protein sequence Red =Cloning site Green =Tags(s)

MSTNGDDHQVKDSLEQLRCHFTWELSIDDDEMPDLENRVLDQIEFLDTKYSVGIHNNLLAYVKHLKGQNEE
ALKSLKEAENLMQEEHDNQNVRSLVTWGNFAWMYYHMGRLAEAQTYLDKVENICKKLSNPFYRMECPE
IDCEEGWALLKCGGKNYERAKACFEKVLEVDPENPESSAGYASAYRLDGFKLATKNHKPFSLPLRQAV
RLNPDNGYIKVLLALKLQDEGQEAEGEKYIEEALANMSSQTYVFRYAAKFYRRKGSVDKALELLKKALQE
TPTSULLHHQIGLCYKAQMIQIKEATKGGQPRGQNRKLDKMIIRSAIFHFESAVEKKPTFEVAHLDLARMY
IEAGNHRKAEENFQKLLCMKPVVEETMQDIHFHYGRFQEFQKKSDVNIIHYLKAIKIEQASLTRDKSIN
SLKKLVLRKLRKALDLESLSLLGFVYKLEGNMNEALEYERLRLAADFENSVRQGP

TRTRPLEQKLISEEDLAANDILDYKDDDDKV

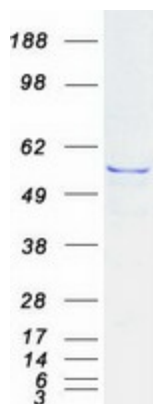
Tag:	C-Myc/DDK
Predicted MW:	55.2 kDa
Concentration:	>0.05 µg/µL as determined by microplate BCA method
Purity:	> 80% as determined by SDS-PAGE and Coomassie blue staining
Buffer:	25 mM Tris-HCl, 100 mM glycine, pH 7.3, 10% glycerol
Preparation:	Recombinant protein was captured through anti-DDK affinity column followed by conventional chromatography steps.
Note:	For testing in cell culture applications, please filter before use. Note that you may experience some loss of protein during the filtration process.
Storage:	Store at -80°C.
Stability:	Stable for 12 months from the date of receipt of the product under proper storage and handling conditions. Avoid repeated freeze-thaw cycles.



[View online »](#)

RefSeq:	NP_001539
Locus ID:	3434
UniProt ID:	P09914
RefSeq Size:	4396
Cytogenetics:	10q23.31
RefSeq ORF:	1434
Synonyms:	C56; G10P1; IFI-56; IFI-56K; IFI56; IFIT-1; IFNA11; ISG56; P56; RNM561
Summary:	This gene encodes a protein containing tetratricopeptide repeats that was originally identified as induced upon treatment with interferon. The encoded protein may inhibit viral replication and translational initiation. This gene is located in a cluster on chromosome 10 with five other closely related genes. There is a pseudogene for this gene on chromosome 13. Alternatively spliced transcript variants encoding multiple isoforms have been observed. [provided by RefSeq, Aug 2012]

Product images:



Coomassie blue staining of purified IFIT1 protein (Cat# TP303320). The protein was produced from HEK293T cells transfected with IFIT1 cDNA clone (Cat# [RC203320]) using MegaTran 2.0 (Cat# [TT210002]).