

## Product datasheet for **TP303306L**

### UBE2B (NM\_003337) Human Recombinant Protein

#### Product data:

Product Type:	Recombinant Proteins
Description:	Recombinant protein of human ubiquitin-conjugating enzyme E2B (RAD6 homolog) (UBE2B), 1 mg
Species:	Human
Expression Host:	HEK293T
Expression cDNA Clone or AA Sequence:	>RC203306 representing NM_003337 <b>Red</b> =Cloning site <b>Green</b> =Tags(s)
	 MSTPARRRLMRDFKRLQEDPPVGVSGAPSENNIMQWNAVIFGPEGTPFEDGTFKLVIEFSEEYPNKPPTV RFLSKMFHPNVYADGSICLDILQNRWSPTYDVSSILTSIQSLLDEPNPNPANSQAAQLYQENKREYEKR VSAIVEQSWNDS  <b>TRTRPLEQKLISEEDLAANDILDYKDDDDKV</b>
Tag:	C-Myc/DDK
Predicted MW:	17.1 kDa
Concentration:	>0.05 µg/µL as determined by microplate BCA method
Purity:	> 80% as determined by SDS-PAGE and Coomassie blue staining
Buffer:	25 mM Tris-HCl, 100 mM glycine, pH 7.3, 10% glycerol
Preparation:	Recombinant protein was captured through anti-DDK affinity column followed by conventional chromatography steps.
Note:	For testing in cell culture applications, please filter before use. Note that you may experience some loss of protein during the filtration process.
Storage:	Store at -80°C.
Stability:	Stable for 12 months from the date of receipt of the product under proper storage and handling conditions. Avoid repeated freeze-thaw cycles.
RefSeq:	<a href="#">NP_003328</a>
Locus ID:	7320
UniProt ID:	<a href="#">P63146</a>



[View online »](#)

RefSeq Size: 2631

Cytogenetics: 5q31.1

RefSeq ORF: 456

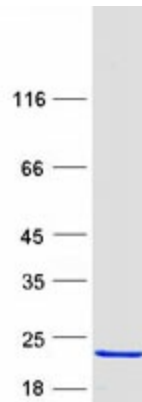
Synonyms: E2-17kDa; HHR6B; HR6B; RAD6B; UBC2

**Summary:** The modification of proteins with ubiquitin is an important cellular mechanism for targeting abnormal or short-lived proteins for degradation. Ubiquitination involves at least three classes of enzymes: ubiquitin-activating enzymes, or E1s, ubiquitin-conjugating enzymes, or E2s, and ubiquitin-protein ligases, or E3s. This gene encodes a member of the E2 ubiquitin-conjugating enzyme family. This enzyme is required for post-replicative DNA damage repair. Its protein sequence is 100% identical to the mouse, rat, and rabbit homologs, which indicates that this enzyme is highly conserved in eukaryotic evolution. [provided by RefSeq, Jul 2008]

**Protein Families:** Druggable Genome

**Protein Pathways:** Ubiquitin mediated proteolysis

### Product images:



Coomassie blue staining of purified UBE2B protein (Cat# [TP303306]). The protein was produced from HEK293T cells transfected with UBE2B cDNA clone (Cat# [RC203306]) using MegaTran 2.0 (Cat# [TT210002]).