

Product datasheet for **TP303303L**

RHOA (NM_001664) Human Recombinant Protein

Product data:

Product Type:	Recombinant Proteins
Description:	Recombinant protein of human ras homolog gene family, member A (RHOA), 1 mg
Species:	Human
Expression Host:	HEK293T
Expression cDNA Clone or AA Sequence:	>RC203303 protein sequence Red =Cloning site Green =Tags(s)
	 MAAIRKKLVIVGDGACGKTCLLIVFSKDQFPEVYVPTVFENYVADIEVDGKQVELALWDTAGQEDYDRLR PLSYPD TDVILMCF SIDSPD SLENIPEKWTPEVKHF CPNVPIILVGNKKDLR NDEHTRRELAKMKQEPVK PEEGRD MANRIGAFGYMECSAKTKDGVREVFEMATRAALQARRGKKKSGCLVL TRTRPLEQKLISEEDLAANDILDYKDDDDKV
Tag:	C-Myc/DDK
Predicted MW:	21.6 kDa
Concentration:	>0.05 µg/µL as determined by microplate BCA method
Purity:	> 80% as determined by SDS-PAGE and Coomassie blue staining
Buffer:	25 mM Tris-HCl, 100 mM glycine, pH 7.3, 10% glycerol
Preparation:	Recombinant protein was captured through anti-DDK affinity column followed by conventional chromatography steps.
Note:	For testing in cell culture applications, please filter before use. Note that you may experience some loss of protein during the filtration process.
Storage:	Store at -80°C.
Stability:	Stable for 12 months from the date of receipt of the product under proper storage and handling conditions. Avoid repeated freeze-thaw cycles.
RefSeq:	NP_001655
Locus ID:	387
UniProt ID:	P61586 , A0A024R324 , Q9BVT0
RefSeq Size:	1926



[View online »](#)

Cytogenetics: 3p21.31

RefSeq ORF: 579

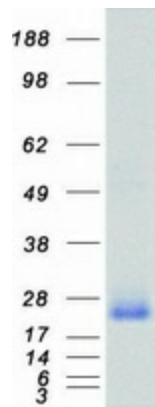
Synonyms: ARH12; ARHA; EDFAOB; RHO12; RHOH12

Summary: This gene encodes a member of the Rho family of small GTPases, which cycle between inactive GDP-bound and active GTP-bound states and function as molecular switches in signal transduction cascades. Rho proteins promote reorganization of the actin cytoskeleton and regulate cell shape, attachment, and motility. Overexpression of this gene is associated with tumor cell proliferation and metastasis. Multiple alternatively spliced variants have been identified. [provided by RefSeq, Sep 2015]

Protein Families: Druggable Genome

Protein Pathways: Adherens junction, Axon guidance, Chemokine signaling pathway, Focal adhesion, Leukocyte transendothelial migration, Neurotrophin signaling pathway, Pathogenic Escherichia coli infection, Pathways in cancer, Regulation of actin cytoskeleton, T cell receptor signaling pathway, TGF-beta signaling pathway, Tight junction, Vascular smooth muscle contraction, Wnt signaling pathway

Product images:



Coomassie blue staining of purified RHOA protein (Cat# [TP303303]). The protein was produced from HEK293T cells transfected with RHOA cDNA clone (Cat# [RC203303]) using MegaTran 2.0 (Cat# [TT210002]).