

## Product datasheet for TP303291L

### Thioredoxin domain containing 9 (TXNDC9) (NM\_005783) Human Recombinant Protein

#### Product data:

**Product Type:** Recombinant Proteins

**Description:** Recombinant protein of human thioredoxin domain containing 9 (TXNDC9), 1 mg

**Species:** Human

**Expression Host:** HEK293T

**Expression cDNA Clone or AA Sequence:** >RC203291 protein sequence  
Red=Cloning site Green=Tags(s)

MEADASVDMFSKVLQHLQTTKLVEEHLDSSEIQKLDQMDDELRLKEKRLQALRKAQQKQEWLSKGGH  
GEYREIPSERDFFQEVKESENVCHFYRDSTFRCKILDRHLAILSKKHLETKFLKLNVEKAPFLCERLHI  
KVIPTLALLKDGKTQDYVVGFTDLGNTDDFTTETLEWRLGSSDILNYSGNLMEPPFQNKKFGTNTKLE  
KKTIRGKKYSDSDDD

TRTRPLEQKLISEEDLAANDILDYKDDDDKV

**Tag:** C-Myc/DDK

**Predicted MW:** 26.4 kDa

**Concentration:** >0.05 µg/µL as determined by microplate BCA method

**Purity:** > 80% as determined by SDS-PAGE and Coomassie blue staining

**Buffer:** 25 mM Tris-HCl, 100 mM glycine, pH 7.3, 10% glycerol

**Preparation:** Recombinant protein was captured through anti-DDK affinity column followed by conventional chromatography steps.

**Note:** For testing in cell culture applications, please filter before use. Note that you may experience some loss of protein during the filtration process.

**Storage:** Store at -80°C.

**Stability:** Stable for 12 months from the date of receipt of the product under proper storage and handling conditions. Avoid repeated freeze-thaw cycles.

**RefSeq:** [NP\\_005774](#)

**Locus ID:** 10190

**UniProt ID:** [O14530](#)



[View online »](#)

RefSeq Size: 1556

Cytogenetics: 2q11.2

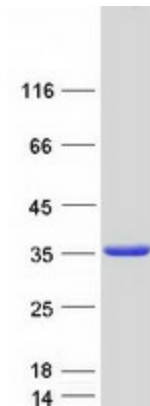
RefSeq ORF: 678

Synonyms: APACD; PHLP3

**Summary:** The protein encoded by this gene is a member of the thioredoxin family. The exact function of this protein is not known but it is associated with cell differentiation. [provided by RefSeq, Jul 2008]

**Protein Families:** Druggable Genome

### Product images:



Coomassie blue staining of purified TXNDC9 protein (Cat# [TP303291]). The protein was produced from HEK293T cells transfected with TXNDC9 cDNA clone (Cat# [RC203291]) using MegaTran 2.0 (Cat# [TT210002]).