

## Product datasheet for TP303281M

### C20orf114 (BPIFB1) (NM\_033197) Human Recombinant Protein

#### Product data:

Product Type:	Recombinant Proteins
Description:	Recombinant protein of human chromosome 20 open reading frame 114 (C20orf114), 100 µg
Species:	Human
Expression Host:	HEK293T
Expression cDNA Clone or AA Sequence:	>RC203281 representing NM_033197 Red=Cloning site Green=Tags(s)

MAGPWTFTLLCGLLAATLIQATLSPTAVLILGPKVIKEKLTQELKDHNATSILQQPLLSAMREKPAGGI  
PVLGSLVNTVLKHIIWLKVITANILQLQVKPSANDQELLVKIPLDMVAGFNTPLVKTIVEFHMTTEAQAT  
IRMDTSASGPTRLVLSDCATSHGSLRIQLLHKL SFLVNALAKQVMNLLVPSLPNLVKNQLCPVIEASFNG  
MYADLLQLVKVPISLIDRLEFDLLYP AIKGDTIQLYLGAKLLDSQGKVTWKFNNSAASLTMPTLDNIPF  
SLIVSQDVVKA AVAVLSPEEFMVLLDSVLPESAHLKSSIGLINEKAADKLGSTQIVKILTQDTPPEFFI  
DQGHAKVAQLIVLEVFPSEALRPLFTLGIEASSEAQFYTKGDQLILNLNNISSDRIQLMNSGIGWFQPD  
VLKNIITEIHSILLPNQNGKLRSGVPVSLVKALGFEEAESSLTKDALVLT PASLWKPSSPVSQ

TRTRPLEQKLISEEDLAANDILDYKDDDDKV

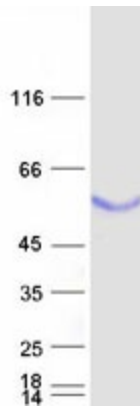
Tag:	C-Myc/DDK
Predicted MW:	50.2 kDa
Concentration:	>0.05 µg/µL as determined by microplate BCA method
Purity:	> 80% as determined by SDS-PAGE and Coomassie blue staining
Buffer:	25 mM Tris-HCl, 100 mM glycine, pH 7.3, 10% glycerol
Preparation:	Recombinant protein was captured through anti-DDK affinity column followed by conventional chromatography steps.
Note:	For testing in cell culture applications, please filter before use. Note that you may experience some loss of protein during the filtration process.
Storage:	Store at -80°C.
Stability:	Stable for 12 months from the date of receipt of the product under proper storage and handling conditions. Avoid repeated freeze-thaw cycles.
RefSeq:	<u><a href="#">NP_149974</a></u>



[View online »](#)

Locus ID:	92747
UniProt ID:	<a href="#">Q8TDL5</a>
RefSeq Size:	1734
Cytogenetics:	20q11.21
RefSeq ORF:	1452
Synonyms:	C20orf114; LPLUNC1
Summary:	The protein encoded by this gene may be involved in the innate immune response to bacterial exposure in the mouth, nasal cavities, and lungs. The encoded protein is secreted and is a member of the BPI/LBP/PLUNC protein superfamily. This gene is found with other members of the superfamily in a cluster on chromosome 20. [provided by RefSeq, Jul 2008]
Protein Families:	Druggable Genome, Secreted Protein, Transmembrane

### Product images:



Coomassie blue staining of purified BPIFB1 protein (Cat# [TP303281]). The protein was produced from HEK293T cells transfected with BPIFB1 cDNA clone (Cat# [RC203281]) using MegaTran 2.0 (Cat# [TT210002]).