

## Product datasheet for **TP303274M**

### **TUBA6 (TUBA1C) (NM\_032704) Human Recombinant Protein**

#### Product data:

**Product Type:** Recombinant Proteins

**Description:** Recombinant protein of human tubulin, alpha 1c (TUBA1C), 100 µg

**Species:** Human

**Expression Host:** HEK293T

**Expression cDNA Clone  
or AA Sequence:** >RC203274 protein sequence  
**Red**=Cloning site **Green**=Tags(s)

MRECISIHVGQAGVQIGNACWELYCLEHGIQPDGQMPSDKTIGGGDDSFNTFFSETGAGKHVPRAVFDL  
EPTVIDEVRTGTYRQLFHPEQLITGKEDAANNYARGHYTIGKEIIDLVLDRIKLDQCTGLQGFLVFHS  
FGGGTSGSFTSLLMERLSVDYGKKSLEFSIYPAPQVSTAVVEPYNLSILTTHTTLEHSDCAFMVDNEAIY  
DICRRNLDIERPTYNLNRLISQIVSSITASLRFDGALNVDLTFQTNLVPYPRIHFPLATYAPVISA EK  
AYHEQLTVAEITNACFEPANQMVKCDPRHGKYMACECLLYRGDVVDPKDVNAAIATIKTKRTIQFVDWCPTG  
FKVGINYQPPTVVPGGDLAKVQRAVCMLSNTTAVAEAWARLDHKFDLMYAKRAFVHWYVGEEMEEGEFSE  
AREDMAALEKDYEVEVGADSADGEDEGE EY

**TRTRPLEQKLISEEDLAANDILDYKDDDDKV**

**Tag:** C-Myc/DDK

**Predicted MW:** 49.7 kDa

**Concentration:** >0.05 µg/µL as determined by microplate BCA method

**Purity:** > 80% as determined by SDS-PAGE and Coomassie blue staining

**Buffer:** 25 mM Tris-HCl, 100 mM glycine, pH 7.3, 10% glycerol

**Preparation:** Recombinant protein was captured through anti-DDK affinity column followed by conventional chromatography steps.

**Note:** For testing in cell culture applications, please filter before use. Note that you may experience some loss of protein during the filtration process.

**Storage:** Store at -80°C.

**Stability:** Stable for 12 months from the date of receipt of the product under proper storage and handling conditions. Avoid repeated freeze-thaw cycles.

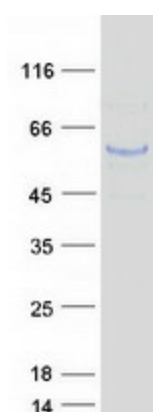
**RefSeq:** [NP\\_116093](#)



[View online »](#)

Locus ID:	84790
UniProt ID:	<a href="#">Q9BQE3</a> , <a href="#">Q99867</a>
RefSeq Size:	1581
Cytogenetics:	12q13.12
RefSeq ORF:	1347
Synonyms:	bcm948; TUBA6
Summary:	Tubulin is the major constituent of microtubules. It binds two moles of GTP, one at an exchangeable site on the beta chain and one at a non-exchangeable site on the alpha chain. [UniProtKB/Swiss-Prot Function]
Protein Pathways:	Gap junction, Pathogenic Escherichia coli infection

### Product images:



Coomassie blue staining of purified TUBA1C protein (Cat# [TP303274]). The protein was produced from HEK293T cells transfected with TUBA1C cDNA clone (Cat# [RC203274]) using MegaTran 2.0 (Cat# [TT210002]).