

Product datasheet for **TP303271M**

RAG1AP1 (SLC50A1) (NM_018845) Human Recombinant Protein

Product data:

Product Type: Recombinant Proteins

Description: Recombinant protein of human recombination activating gene 1 activating protein 1 (RAG1AP1), transcript variant 1, 100 µg

Species: Human

Expression Host: HEK293T

Expression cDNA Clone or AA Sequence: >RC203271 protein sequence
Red=Cloning site **Green**=Tags(s)

MEAGGFDSLIIYGACWFTLGMFSAGLSDLRHRMTRSVDNVQFLPFLTTEVNNLWLSYGALKGDGILI
VWNTVGAALQTLYLAYLHYCPRKRVLLQTATLLGVLLLGYGFWLLVPPEARLQQLGLFCSVFTISM
YLSPLADLAKVIQTKSTQCLSYP LTIATLLTSASWCLYGFRLRDPYIMVSNFPGIVTSFIRFWLFWKYPQ
EQDRNYWLLQT

TRTRPLEQKLISEEDLAANDILDYKDDDDKV

Tag: C-Myc/DDK

Predicted MW: 24.8 kDa

Concentration: >0.05 µg/µL as determined by microplate BCA method

Purity: > 80% as determined by SDS-PAGE and Coomassie blue staining

Buffer: 25 mM Tris-HCl, 100 mM glycine, pH 7.3, 10% glycerol

Preparation: Recombinant protein was captured through anti-DDK affinity column followed by conventional chromatography steps.

Note: For testing in cell culture applications, please filter before use. Note that you may experience some loss of protein during the filtration process.

Storage: Store at -80°C.

Stability: Stable for 12 months from the date of receipt of the product under proper storage and handling conditions. Avoid repeated freeze-thaw cycles.

RefSeq: [NP_061333](#)

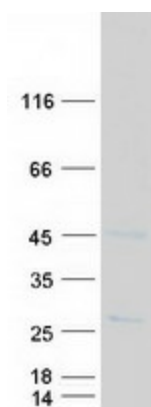
Locus ID: 55974



[View online »](#)

UniProt ID:	Q9BRV3
RefSeq Size:	1363
Cytogenetics:	1q22
RefSeq ORF:	663
Synonyms:	HsSWEET1; RAG1AP1; SCP; slv; SWEET1
Summary:	Mediates sugar transport across membranes. May stimulate V(D)J recombination by the activation of RAG1.[UniProtKB/Swiss-Prot Function]
Protein Families:	Transmembrane

Product images:



Coomassie blue staining of purified SLC50A1 protein (Cat# [TP303271]). The protein was produced from HEK293T cells transfected with SLC50A1 cDNA clone (Cat# [RC203271]) using MegaTran 2.0 (Cat# [TT210002]).