

## Product datasheet for **TP303271L**

### **RAG1AP1 (SLC50A1) (NM\_018845) Human Recombinant Protein**

#### **Product data:**

**Product Type:** Recombinant Proteins

**Description:** Recombinant protein of human recombination activating gene 1 activating protein 1 (RAG1AP1), transcript variant 1, 1 mg

**Species:** Human

**Expression Host:** HEK293T

**Expression cDNA Clone or AA Sequence:** >RC203271 protein sequence  
**Red**=Cloning site **Green**=Tags(s)

MEAGGFDSLIIYGACWFTLGMFSAGLSDLRHMRMTRSVDNVQFLPFLTTEVNNLWLSYGALKGDGILI  
VWNTVGAALQTLYLAYLHYCPRKRVLLQTATLLGVLLLGYGFWLLVPNPEARLQQLGLFCSVFTISM  
YLSPLADLAKVIQTKSTQCLSYP LTIATLLTSASWCLYGFRLRDPYIMVSNFPGIVTSFIRFWLFWKYPQ  
EQDRNYWLLQT

**TRTRPLEQKLISEEDLAANDILDYKDDDDKV**

**Tag:** C-Myc/DDK

**Predicted MW:** 24.8 kDa

**Concentration:** >0.05 µg/µL as determined by microplate BCA method

**Purity:** > 80% as determined by SDS-PAGE and Coomassie blue staining

**Buffer:** 25 mM Tris-HCl, 100 mM glycine, pH 7.3, 10% glycerol

**Preparation:** Recombinant protein was captured through anti-DDK affinity column followed by conventional chromatography steps.

**Note:** For testing in cell culture applications, please filter before use. Note that you may experience some loss of protein during the filtration process.

**Storage:** Store at -80°C.

**Stability:** Stable for 12 months from the date of receipt of the product under proper storage and handling conditions. Avoid repeated freeze-thaw cycles.

**RefSeq:** [NP\\_061333](#)

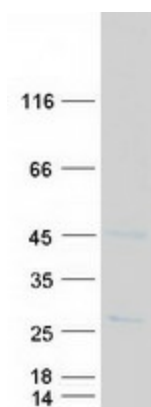
**Locus ID:** 55974



[View online »](#)

UniProt ID:	<a href="#">Q9BRV3</a>
RefSeq Size:	1363
Cytogenetics:	1q22
RefSeq ORF:	663
Synonyms:	HsSWEET1; RAG1AP1; SCP; slv; SWEET1
Summary:	Mediates sugar transport across membranes. May stimulate V(D)J recombination by the activation of RAG1.[UniProtKB/Swiss-Prot Function]
Protein Families:	Transmembrane

### Product images:



Coomassie blue staining of purified SLC50A1 protein (Cat# [TP303271]). The protein was produced from HEK293T cells transfected with SLC50A1 cDNA clone (Cat# [RC203271]) using MegaTran 2.0 (Cat# [TT210002]).