

Product datasheet for TP303270M

BANF1 (NM_003860) Human Recombinant Protein

Product data:

Product Type:	Recombinant Proteins
Description:	Recombinant protein of human barrier to autointegration factor 1 (BANF1), transcript variant 1, 100 µg
Species:	Human
Expression Host:	HEK293T
Expression cDNA Clone or AA Sequence:	>RC203270 protein sequence Red=Cloning site Green=Tags(s)
	MTTSQKHRDFVAEPMGEKPVGSLAGIGEVLGKKLEERGFDKAYVVLGQFLVLKKDEDLFREWLKDTCGAN AKQSRDCFGCLREWCD AFL
	TRTRPLEQKLISEEDLAANDILDYKDDDDKV
Tag:	C-Myc/DDK
Predicted MW:	9.9 kDa
Concentration:	>0.05 µg/µL as determined by microplate BCA method
Purity:	> 80% as determined by SDS-PAGE and Coomassie blue staining
Buffer:	25 mM Tris-HCl, 100 mM glycine, pH 7.3, 10% glycerol
Preparation:	Recombinant protein was captured through anti-DDK affinity column followed by conventional chromatography steps.
Note:	For testing in cell culture applications, please filter before use. Note that you may experience some loss of protein during the filtration process.
Storage:	Store at -80°C.
Stability:	Stable for 12 months from the date of receipt of the product under proper storage and handling conditions. Avoid repeated freeze-thaw cycles.
RefSeq:	<u>NP_003851</u>
Locus ID:	8815
UniProt ID:	<u>O75531</u> , <u>A0A024R5H0</u>
RefSeq Size:	1179



[View online »](#)

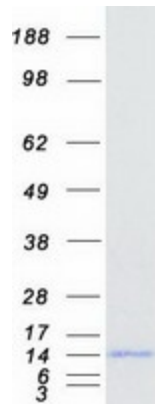
Cytogenetics: 11q13.1

RefSeq ORF: 267

Synonyms: BAF; BCRP1; D14S1460; NGPS

Summary: The protein encoded by this gene was first identified by its ability to protect retroviruses from intramolecular integration and therefore promote intermolecular integration into the host cell genome. The protein forms a homodimer which localizes to both the nucleus and cytoplasm and is specifically associated with chromosomes during mitosis. This protein binds to double stranded DNA in a non-specific manner and also binds to LEM-domain containing proteins of the nuclear envelope. This protein is thought to facilitate nuclear reassembly by binding with both DNA and inner nuclear membrane proteins and thereby recruit chromatin to the nuclear periphery. Alternative splicing results in multiple transcript variants encoding the same protein.[provided by RefSeq, Jan 2009]

Product images:



Coomassie blue staining of purified BANF1 protein (Cat# [TP303270]). The protein was produced from HEK293T cells transfected with BANF1 cDNA clone (Cat# [RC203270]) using MegaTran 2.0 (Cat# [TT210002]).