

Product datasheet for **TP303258**

HBA-T2 (HBB) (NM_000518) Human Recombinant Protein

Product data:

Product Type:	Recombinant Proteins
Description:	Recombinant protein of human hemoglobin, beta (HBB), 20 µg
Species:	Human
Expression Host:	HEK293T
Expression cDNA Clone or AA Sequence:	>RC203258 protein sequence Red =Cloning site Green =Tags(s)
	 MVHLTPEEKSAVTALWGKLVNVDEVGGEALGRLLVYPWTQRRFFESFGDLSTPDAVMGNPKVKAHGKKVL G AFSDGLAHL DNLKGT FATLSELHCDKLVDPENFRLLGNVLVCLAHHFGKEFTPPVQAAYQKVVAGVAN ALAHKYH TRTRPLEQKLISEEDLAANDILDYKDDDDKV
Tag:	C-Myc/DDK
Predicted MW:	15.8 kDa
Concentration:	>0.05 µg/µL as determined by microplate BCA method
Purity:	> 80% as determined by SDS-PAGE and Coomassie blue staining
Buffer:	25 mM Tris-HCl, 100 mM glycine, pH 7.3, 10% glycerol
Preparation:	Recombinant protein was captured through anti-DDK affinity column followed by conventional chromatography steps.
Note:	For testing in cell culture applications, please filter before use. Note that you may experience some loss of protein during the filtration process.
Storage:	Store at -80°C.
Stability:	Stable for 12 months from the date of receipt of the product under proper storage and handling conditions. Avoid repeated freeze-thaw cycles.
RefSeq:	NP_000509
Locus ID:	3043
UniProt ID:	P68871



[View online »](#)

RefSeq Size: 626

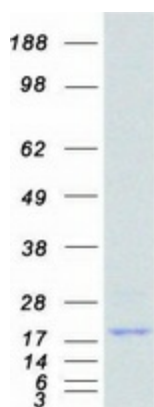
Cytogenetics: 11p15.4

RefSeq ORF: 441

Synonyms: beta-globin; CD113t-C; ECTY6

Summary: The alpha (HBA) and beta (HBB) loci determine the structure of the 2 types of polypeptide chains in adult hemoglobin, Hb A. The normal adult hemoglobin tetramer consists of two alpha chains and two beta chains. Mutant beta globin causes sickle cell anemia. Absence of beta chain causes beta-zero-thalassemia. Reduced amounts of detectable beta globin causes beta-plus-thalassemia. The order of the genes in the beta-globin cluster is 5'-epsilon -- gamma-G -- gamma-A -- delta -- beta--3'. [provided by RefSeq, Jul 2008]

Product images:



Coomassie blue staining of purified HBB protein (Cat# TP303258). The protein was produced from HEK293T cells transfected with HBB cDNA clone (Cat# [RC203258]) using MegaTran 2.0 (Cat# [TT210002]).