

Product datasheet for **TP303243L**

Biliverdin Reductase (BLVRA) (NM_000712) Human Recombinant Protein

Product data:

Product Type: Recombinant Proteins

Description: Recombinant protein of human biliverdin reductase A (BLVRA), 1 mg

Species: Human

Expression Host: HEK293T

Expression cDNA Clone or AA Sequence: >RC203243 protein sequence
Red=Cloning site **Green**=Tags(s)

MNTEPERKFGVVWGVGRAGSVRMRDLRNPSSAFLNLIGFVSRRELGSIDGVQQISLEDALSSQEVEV
AYICSESSHEDYIRQFLNAGKHVLEYPMTLSLAAAQELWELAEQKGKVSHEEHVELLMEEFAFLKKEV
VGKDLLKGSLLFTAGPLEEERFGFPAFSGISRLTWLVSFLGELSLVSATLEERKEDQYMKMTVCLETEKK
SPLSWIEEKGPGLKRNRYLSFHFKSGSLENVNPVGVNKNIFLKDQNIQVQKLLGQFSEKELAAEKKRILH
CLGLAEEIQKYCCSRK

TRTRPLEQKLISEEDLAANDILDYKDDDDKV

Tag: C-Myc/DDK

Predicted MW: 33.2 kDa

Concentration: >0.05 µg/µL as determined by microplate BCA method

Purity: > 80% as determined by SDS-PAGE and Coomassie blue staining

Buffer: 25 mM Tris-HCl, 100 mM glycine, pH 7.3, 10% glycerol

Preparation: Recombinant protein was captured through anti-DDK affinity column followed by conventional chromatography steps.

Note: For testing in cell culture applications, please filter before use. Note that you may experience some loss of protein during the filtration process.

Storage: Store at -80°C.

Stability: Stable for 12 months from the date of receipt of the product under proper storage and handling conditions. Avoid repeated freeze-thaw cycles.

RefSeq: [NP_000703](#)

Locus ID: 644



[View online »](#)

UniProt ID: [P53004](#), [A0A140VJF4](#)

RefSeq Size: 1094

Cytogenetics: 7p13

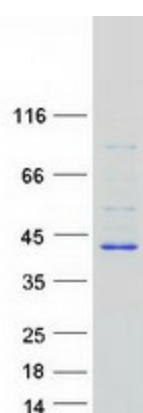
RefSeq ORF: 888

Synonyms: BLVR; BVR; BVRA

Summary: The protein encoded by this gene belongs to the biliverdin reductase family, members of which catalyze the conversion of biliverdin to bilirubin in the presence of NADPH or NADH. Mutations in this gene are associated with hyperbiliverdinemia. Alternatively spliced transcript variants have been found for this gene. [provided by RefSeq, Dec 2011]

Protein Pathways: Porphyrin and chlorophyll metabolism

Product images:



Coomassie blue staining of purified BLVRA protein (Cat# [TP303243]). The protein was produced from HEK293T cells transfected with BLVRA cDNA clone (Cat# [RC203243]) using MegaTran 2.0 (Cat# [TT210002]).