

## Product datasheet for **TP303204**

### PSMD2 (NM\_002808) Human Recombinant Protein

#### Product data:

Product Type:	Recombinant Proteins
Description:	Recombinant protein of human proteasome (prosome, macropain) 26S subunit, non-ATPase, 2 (PSMD2), 20 µg
Species:	Human
Expression Host:	HEK293T
Expression cDNA Clone or AA Sequence:	>RC203204 protein sequence <b>Red</b> =Cloning site <b>Green</b> =Tags(s)

MEEGGRDKAPVQPQQSPAAAPGGTDEKPSGKERRDAGDKDKEQELSEEDKQLQDELEMLVERLGEKDTSL  
 YRPALEELRRQIRSSSTTSMTSVPKPLKFLRPHYGKLEIYENMAPGENKRFAADIISVLAMTMSGERECL  
 KYRLVGSQEELASWGHYVRHLAGEVAKEWQELDDAEKVQREPLTLVKEIVPYNMAHNAEHEACDLLME  
 IEQVDMLEKDIDENAYAKVCLYLTSCVNYVPEPENSALLRCALGVFRKFSRFPALRLALMLNDMELVED  
 IFTSCKDWWVQKQMAFMLGRHGVFLELSEEDVEEYEDLTEIMSNVQLNSNFLALARELDIMEPKVPDDIYK  
 THLENNRFGSGSQVDSARMNLAASSFVNGFVNAAFGQDKLLTDDGNKWLYKNKDHGMLSAASLGMILLW  
 DVDGGLTQIDKYLYSSEDIKSGALLACGIVNSGVRNECDPALALLSDYVLHNSNTMRLGSIFGLGLAYA  
 GSNREDVLTLLLPMGDSKSSMEVAGVTALACGMIAVGSCNGDVTSTILQTIMEKSETELKDTYARWLP  
 GLGLNHLGKGEAIEAILAALEVSEPFRRFANTLVDCAYAGSGNVLKVQQLLHICSEHFDSKEKEEDKD  
 KKEKKDKDKKEAPADMGAHQGVAVLGIALIAMGEEIGAEMALRTFGHLLRYGEPTLRRAVPLALALISVS  
 NPRLNILDTLKFSHDADPEVSYISIFAMGMVSGTNNARLAAMLRQLAQYHAKDPNNLFMVRLAQGLT  
 H  
 LGKGTLTLCPYHSDRQLMSQVAVAGLLTVLVSFLDVRNIIKSHYVLYGLVAAMQPRMLVTFDEELRPL  
 PVSVRVQGAVDVVGGQAGPKTITGFQTHTPVLLAHGERAELATEEFLPVTPILEGFVILRKNPNYDL

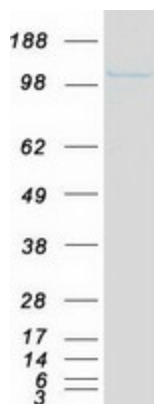
**TRTRPLEQKLISEEDLAANDILDYKDDDDKV**

Tag:	C-Myc/DDK
Predicted MW:	100 kDa
Concentration:	>0.05 µg/µL as determined by microplate BCA method
Purity:	> 80% as determined by SDS-PAGE and Coomassie blue staining



[View online »](#)

<b>Buffer:</b>	25 mM Tris-HCl, 100 mM glycine, pH 7.3, 10% glycerol
<b>Preparation:</b>	Recombinant protein was captured through anti-DDK affinity column followed by conventional chromatography steps.
<b>Note:</b>	For testing in cell culture applications, please filter before use. Note that you may experience some loss of protein during the filtration process.
<b>Storage:</b>	Store at -80°C.
<b>Stability:</b>	Stable for 12 months from the date of receipt of the product under proper storage and handling conditions. Avoid repeated freeze-thaw cycles.
<b>RefSeq:</b>	<a href="#">NP_002799</a>
<b>Locus ID:</b>	5708
<b>UniProt ID:</b>	<a href="#">Q13200</a>
<b>RefSeq Size:</b>	3076
<b>Cytogenetics:</b>	3q27.1
<b>RefSeq ORF:</b>	2724
<b>Synonyms:</b>	P97; RPN1; S2; TRAP2
<b>Summary:</b>	<p>The 26S proteasome is a multicatalytic proteinase complex with a highly ordered structure composed of 2 complexes, a 20S core and a 19S regulator. The 20S core is composed of 4 rings of 28 non-identical subunits; 2 rings are composed of 7 alpha subunits and 2 rings are composed of 7 beta subunits. The 19S regulator is composed of a base, which contains 6 ATPase subunits and 2 non-ATPase subunits, and a lid, which contains up to 10 non-ATPase subunits. Proteasomes are distributed throughout eukaryotic cells at a high concentration and cleave peptides in an ATP/ubiquitin-dependent process in a non-lysosomal pathway. An essential function of a modified proteasome, the immunoproteasome, is the processing of class I MHC peptides. This gene encodes one of the non-ATPase subunits of the 19S regulator lid. In addition to participation in proteasome function, this subunit may also participate in the TNF signalling pathway since it interacts with the tumor necrosis factor type 1 receptor. A pseudogene has been identified on chromosome 1. Alternative splicing results in multiple transcript variants of this gene. [provided by RefSeq, Jul 2013]</p>
<b>Protein Families:</b>	Druggable Genome
<b>Protein Pathways:</b>	Proteasome

**Product images:**

Coomassie blue staining of purified PSMD2 protein (Cat# TP303204). The protein was produced from HEK293T cells transfected with PSMD2 cDNA clone (Cat# [RC203204]) using MegaTran 2.0 (Cat# [TT210002]).