

## Product datasheet for TP303174

### Glutathione Synthetase (GSS) (NM\_000178) Human Recombinant Protein

#### Product data:

Product Type:	Recombinant Proteins
Description:	Recombinant protein of human glutathione synthetase (GSS), 20 µg
Species:	Human
Expression Host:	HEK293T
Expression cDNA Clone or AA Sequence:	>RC203174 protein sequence Red=Cloning site Green=Tags(s)

MATNWGSLQLQDKQQLLEELARQAVDRALAEGLLRRTSQEPTSSEVVSYPFTLFPVSLVPSALLEQAYAVQM  
DFNLLVDAVSQNAAFLEQTLSSSTIKQDDFTARLFDIHKQVLKEGIAQTVFLGLNRSYMFQRSADGSPAL  
KQIEINTISASFGGLASRTPAVHRHVLSVLSKTKEAGKILSNPSKGLALGIKAWELYGSPNALVLLIA  
QEKERNIFDQRAIENELLARNIHVIRRTFEDISEKGSLDQDRRLFVDGQEIADVYFRDGYMMPRQYSLQNW  
EARLLERSHAAKCPDIATQLAGTKKVQQLSRPGMLEMLLPQPEAVARLRATFAGLYSLDVGEEGDQA  
IAEALAAPSRFVLKPQREGGNNLYGEEMVQALKQLKDSEERASYILMEKIEPEPFENCLLRPGSPARV  
QCISELGFVYVRQEKTLVMNKHVGHLLRKAIEHADGGVAAGVAVLDPYPV

TRTRPLEQKLISEEDLAANDILDYKDDDDKV

Tag:	C-Myc/DDK
Predicted MW:	52.2 kDa
Concentration:	>0.05 µg/µL as determined by microplate BCA method
Purity:	> 80% as determined by SDS-PAGE and Coomassie blue staining
Buffer:	25 mM Tris-HCl, 100 mM glycine, pH 7.3, 10% glycerol
Preparation:	Recombinant protein was captured through anti-DDK affinity column followed by conventional chromatography steps.
Note:	For testing in cell culture applications, please filter before use. Note that you may experience some loss of protein during the filtration process.
Storage:	Store at -80°C.
Stability:	Stable for 12 months from the date of receipt of the product under proper storage and handling conditions. Avoid repeated freeze-thaw cycles.
RefSeq:	<u><a href="#">NP_000169</a></u>



[View online »](#)

Locus ID: 2937

UniProt ID: [P48637](#)

RefSeq Size: 1918

Cytogenetics: 20q11.22

RefSeq ORF: 1422

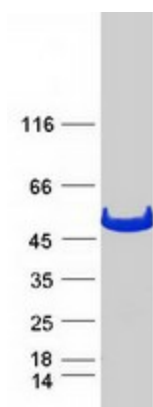
Synonyms: GSHS; HEL-S-64p; HEL-S-88n

**Summary:** Glutathione is important for a variety of biological functions, including protection of cells from oxidative damage by free radicals, detoxification of xenobiotics, and membrane transport. The protein encoded by this gene functions as a homodimer to catalyze the second step of glutathione biosynthesis, which is the ATP-dependent conversion of gamma-L-glutamyl-L-cysteine to glutathione. Defects in this gene are a cause of glutathione synthetase deficiency. [provided by RefSeq, Jul 2008]

**Protein Families:** Druggable Genome

**Protein Pathways:** Glutathione metabolism, Metabolic pathways

### Product images:



Coomassie blue staining of purified GSS protein (Cat# TP303174). The protein was produced from HEK293T cells transfected with GSS cDNA clone (Cat# [RC203174]) using MegaTran 2.0 (Cat# [TT210002]).