

Product datasheet for TP303172

PDE6D (NM_002601) Human Recombinant Protein

Product data:

Product Type:	Recombinant Proteins
Description:	Recombinant protein of human phosphodiesterase 6D, cGMP-specific, rod, delta (PDE6D), 20 µg
Species:	Human
Expression Host:	HEK293T
Expression cDNA Clone or AA Sequence:	>RC203172 protein sequence Red =Cloning site Green =Tags(s)
	 MSAKDERAREILRGFKLNWMNLRDAETGKILWQGTEDLSVPGVEHEARVPKILKCKAVSRELNFSSTEQ MEKFRLEQKVYFKGQCLEEWFFFGFVIPNSTNTWQSLIEAAPESQMMPASVLTGNVVIETKFFDDDLLV STSRVRLFYV TRTRPLEQKLISEEDLAANDILDYKDDDDKV
Tag:	C-Myc/DDK
Predicted MW:	17.2 kDa
Concentration:	>0.05 µg/µL as determined by microplate BCA method
Purity:	> 80% as determined by SDS-PAGE and Coomassie blue staining
Buffer:	25 mM Tris-HCl, 100 mM glycine, pH 7.3, 10% glycerol
Preparation:	Recombinant protein was captured through anti-DDK affinity column followed by conventional chromatography steps.
Note:	For testing in cell culture applications, please filter before use. Note that you may experience some loss of protein during the filtration process.
Storage:	Store at -80°C.
Stability:	Stable for 12 months from the date of receipt of the product under proper storage and handling conditions. Avoid repeated freeze-thaw cycles.
RefSeq:	NP_002592
Locus ID:	5147
UniProt ID:	O43924 , Q6IB24



[View online »](#)

RefSeq Size: 1214

Cytogenetics: 2q37.1

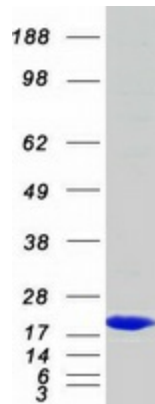
RefSeq ORF: 450

Synonyms: JBTS22; PDED

Summary: This gene encodes the delta subunit of rod-specific photoreceptor phosphodiesterase (PDE), a key enzyme in the phototransduction cascade. A similar protein in cow functions in solubilizing membrane-bound PDE. In addition to its role in the PDE complex, the encoded protein is thought to bind to prenyl groups of proteins to target them to subcellular organelles called cilia. Mutations in this gene are associated with Joubert syndrome-22. Alternative splicing results in multiple splice variants. [provided by RefSeq, Mar 2014]

Protein Pathways: Progesterone-mediated oocyte maturation, Purine metabolism

Product images:



Coomassie blue staining of purified PDE6D protein (Cat# TP303172). The protein was produced from HEK293T cells transfected with PDE6D cDNA clone (Cat# [RC203172]) using MegaTran 2.0 (Cat# [TT210002]).