

Product datasheet for TP303169M

SEC24C (NM_198597) Human Recombinant Protein

Product data:

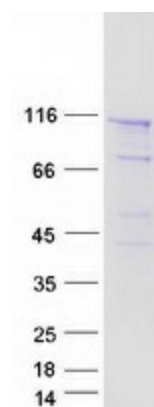
Product Type:	Recombinant Proteins
Description:	Recombinant protein of human SEC24 family, member C (<i>S. cerevisiae</i>) (SEC24C), transcript variant 2, 100 µg
Species:	Human
Expression Host:	HEK293T
Expression cDNA Clone or AA Sequence:	>RC203169 protein sequence Red=Cloning site Green=Tags(s)
	<p>MNVNQSVPPVPPFGQPQPIYPGYHQSSYGGQSGSTAPAIPYGAYNGPVPGYQQTTPPQGMSRAPSSGAPP ASTAQAPCGQAAYGQFGQGDVQNGPSSTVQMQRPLPGSQSFGSPLAPVGNQPPVLQPYGPPPTSAQVATQL SGMQISGAVAPAPPSSGLGFGPPTSLASASGSFPNSGLYGSYPQGQAPPLSQAQGHPIQTPQRSAPSQA SSFTPPASGGPRLPSMTGPLLPGQSFSGPSVSQPNIHVSSPPQALPPGTQMTGPLGLPPLMHSPQQPGYQP QQNGSFGPARGPQSNYGGPYAAPTFGSQPGPPQLPPKRLDPDAIPSPIQVIEDDRNNRGTEPFVTGVR GQVPLVTTNFLVKDQGNASPRYIRCTSYNIPCTSDMAKQAQVPLAAVIKPLARLPPEEASPYVVDHGES GPLRCNRCKAYMCPFMQFIEGRRFQCCFCSCINDVPPQYFQHL DHTGKRVDAYDRPELSLGSYEFLATV DYCKNNKFPSPPAFIFMIDVSYNAI RTGLVRL LCEELKSLLDFLPREGGAEESAIRVGFVTY NKVLHFYN VKSSLAQPQMMVSDVADMVPLLDGFLVNVNESRAVITSLLDQIPEMFADTRETETVFPVIQAGMEAL KAAECAGKLFHTSLPIAEAPGKLNRRDDRKLINTDKEKTLFQPQTGAYQTLAKECVAQGCCVDLFLFP NQYVDVATLSVVPQLTGGSVYKYASFQVENDQERFLSDLRRDVQKVVGFDVAVMRVRTSTGIRAVDFFGAF YMSNTTDVELAGLDGDKTVTVEFKHDDRLNEESGALLQCALLYTSCAGQRRRLRIHNLALNCCTQLADLYR NCETDTLINYMAKFAYRGLNSPVKAVRDTLITQCAQILACYRKN CASPSSAGQLILPECMKLLPVYLNC VLKSDVLQPGA EVTTDDRAYVRQLVTSMDVTETN VFFYPRLPLTKSPVESTTEPPAVRASEERLSNGDI YLLENGLNLFLWVGASVQQGVVQSLFSVSSFSQITSGLSVLPVLDNPLSKKVRGLIDSLRAQRSRYMKLT VVKQEDKMEMLFKHFLVEDKSLSGGASYVDFLCHMHKEIRQLLS</p> <p>TRTRPLEQKLISEEDLAANDILDYKDDDDKV</p>
Tag:	C-Myc/DDK
Predicted MW:	118.1 kDa
Concentration:	>0.05 µg/µL as determined by microplate BCA method
Purity:	> 80% as determined by SDS-PAGE and Coomassie blue staining
Buffer:	25 mM Tris-HCl, 100 mM glycine, pH 7.3, 10% glycerol



[View online »](#)

Preparation:	Recombinant protein was captured through anti-DDK affinity column followed by conventional chromatography steps.
Note:	For testing in cell culture applications, please filter before use. Note that you may experience some loss of protein during the filtration process.
Storage:	Store at -80°C.
Stability:	Stable for 12 months from the date of receipt of the product under proper storage and handling conditions. Avoid repeated freeze-thaw cycles.
RefSeq:	NP_940999
Locus ID:	9632
UniProt ID:	P53992 , A0A024QZM6
RefSeq Size:	4476
Cytogenetics:	10q22.2
RefSeq ORF:	3282
Summary:	The protein encoded by this gene is a member of the SEC24 subfamily of the SEC23/SEC24 family, which is involved in vesicle trafficking. The encoded protein has similarity to yeast Sec24p component of COPII. COPII is the coat protein complex responsible for vesicle budding from the ER. The product of this gene may play a role in shaping the vesicle, as well as in cargo selection and concentration. Alternatively spliced transcript variants encoding the same protein have been identified. [provided by RefSeq, Jul 2008]

Product images:



Coomassie blue staining of purified SEC24C protein (Cat# [TP303169]). The protein was produced from HEK293T cells transfected with SEC24C cDNA clone (Cat# [RC203169]) using MegaTran 2.0 (Cat# [TT210002]).