

## Product datasheet for **TP303166L**

### PDCL (NM\_005388) Human Recombinant Protein

#### Product data:

Product Type:	Recombinant Proteins
Description:	Recombinant protein of human phosducin-like (PDCL), 1 mg
Species:	Human
Expression Host:	HEK293T
Expression cDNA Clone or AA Sequence:	>RC203166 protein sequence <b>Red</b> =Cloning site <b>Green</b> =Tags(s)

MTTLDDKLLGEKLQYYSSSEDESDHEDKDRGRCAPASSVPAEELAGEGISVNTGPKGVIINDWRRFK  
QLETEQREEQCREMERLIKKLSMTCRSHLDEEEEQKQKDLQEKISGKMTLKEFAIMNEDQDDEEFLQQY  
RKQRMEEMRQQLHKGPFQKQVFEISSGEGFLDMIDKEQKSIVIMVHIYEDGIPGTEAMNGCMICLAAEYP  
AVKFKVKSSVIGASSQFTRNALPALLIYKGGELIGNFVRVTDQLGDDFFAVDLEAFLQEFGLLPEKEVL  
VLTSVRNSATCHSESDSLEID

**TRTRPLEQKLISEEDLAANDILDYKDDDDKV**

Tag:	C-Myc/DDK
Predicted MW:	34.1 kDa
Concentration:	>0.05 µg/µL as determined by microplate BCA method
Purity:	> 80% as determined by SDS-PAGE and Coomassie blue staining
Buffer:	25 mM Tris-HCl, 100 mM glycine, pH 7.3, 10% glycerol
Preparation:	Recombinant protein was captured through anti-DDK affinity column followed by conventional chromatography steps.
Note:	For testing in cell culture applications, please filter before use. Note that you may experience some loss of protein during the filtration process.
Storage:	Store at -80°C.
Stability:	Stable for 12 months from the date of receipt of the product under proper storage and handling conditions. Avoid repeated freeze-thaw cycles.
RefSeq:	<u><a href="#">NP_005379</a></u>
Locus ID:	5082



[View online »](#)

UniProt ID: [Q13371](#)

RefSeq Size: 3085

Cytogenetics: 9q33.2

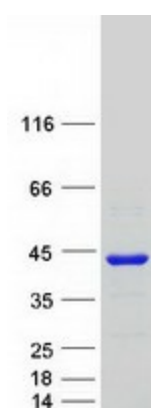
RefSeq ORF: 903

Synonyms: PhLP

**Summary:** Phosducin-like protein is a putative modulator of heterotrimeric G proteins. The protein shares extensive amino acid sequence homology with phosducin, a phosphoprotein expressed in retina and pineal gland. Both phosducin-like protein and phosphoducin have been shown to regulate G-protein signaling by binding to the beta-gamma subunits of G proteins. [provided by RefSeq, Jul 2008]

**Protein Families:** Druggable Genome

### Product images:



Coomassie blue staining of purified PDCL protein (Cat# [TP303166]). The protein was produced from HEK293T cells transfected with PDCL cDNA clone (Cat# [RC203166]) using MegaTran 2.0 (Cat# [TT210002]).