

Product datasheet for TP303164L

SCLY (NM_016510) Human Recombinant Protein

Product data:

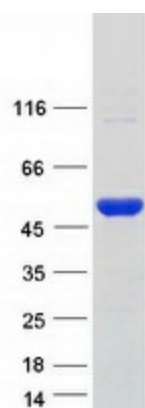
Product Type:	Recombinant Proteins
Description:	Recombinant protein of human selenocysteine lyase (SCLY), 1 mg
Species:	Human
Expression Host:	HEK293T
Expression cDNA Clone or AA Sequence:	>RC203164 protein sequence Red =Cloning site Green =Tags(s)
	<p>MEAAVAPGRDAPAPAASQPSGCGKHNSPERKVYMDYNATTPLEPEVIQAMTKAMWEAWGNPSSPYSAGRK AKDIINAARES LAKMIGGKPDIIFTSGGTESNNLVIHVSVKHFHANQTSKGHTGGHHSPVKGAKPHFIT SSVEHDSIRLPLEHLVEEQVAAVTFVPVSKVSGQTEVDDILA AVRPTTRLVTIMLANNETGIVMPVPEIS QRIKALNQERVAAGLPILVHTDAAQALGKQRVDVEDLGVDFLTIVGHKFGYPRIGALYIRGLGEFTPLY PMLFGGGQERNFRPGTENTPMIAGLGKAAELVTQNCEAYEAHMRDVRDYLEERLEAEFGQKRIHLNSQFP GTQRLPNTCNFSIRGPRLQGHVLAQCRVLMASVGAACHSDHGDQSPVLLSYGVPFDVARNALRLSVGR STTRA EVDLWVQDLKQAVAQLEDQA</p> <p>TRTRPLEQKLISEEDLAANDILDYKDDDDKV</p>
Tag:	C-Myc/DDK
Predicted MW:	48 kDa
Concentration:	>0.05 µg/µL as determined by microplate BCA method
Purity:	> 80% as determined by SDS-PAGE and Coomassie blue staining
Buffer:	25 mM Tris-HCl, 100 mM glycine, pH 7.3, 10% glycerol
Preparation:	Recombinant protein was captured through anti-DDK affinity column followed by conventional chromatography steps.
Note:	For testing in cell culture applications, please filter before use. Note that you may experience some loss of protein during the filtration process.
Storage:	Store at -80°C.
Stability:	Stable for 12 months from the date of receipt of the product under proper storage and handling conditions. Avoid repeated freeze-thaw cycles.
RefSeq:	<u>NP_057594</u>



[View online »](#)

Locus ID:	51540
UniProt ID:	Q96I15 , B4DDP9 , A0A0A0MQU4 , Q59FK2
RefSeq Size:	2544
Cytogenetics:	2q37.3
RefSeq ORF:	1335
Synonyms:	hSCL; SCL
Summary:	Selenocysteine lyase (SCLY; EC 4.4.1.16) catalyzes the pyridoxal 5-prime phosphate-dependent conversion of L-selenocysteine to L-alanine and elemental selenium (Mihara et al., 2000 [PubMed 10692412]).[supplied by OMIM, Mar 2008]
Protein Pathways:	Metabolic pathways, Selenoamino acid metabolism

Product images:



Coomassie blue staining of purified SCLY protein (Cat# [TP303164]). The protein was produced from HEK293T cells transfected with SCLY cDNA clone (Cat# [RC203164]) using MegaTran 2.0 (Cat# [TT210002]).