

## Product datasheet for **TP303157**

### **NAT8 (NM\_003960) Human Recombinant Protein**

#### Product data:

Product Type:	Recombinant Proteins
Description:	Recombinant protein of human N-acetyltransferase 8 (GCN5-related, putative) (NAT8), 20 µg
Species:	Human
Expression Host:	HEK293T
Expression cDNA Clone or AA Sequence:	>RC203157 protein sequence <b>Red</b> =Cloning site <b>Green</b> =Tags(s)
	MAPCHIRKYQESDRQWVGLLSRGMAEHAPATFRQLLKLPRTLILLGGLPLALLLVSGSWLLALVFSISL FPALWFLAKKPWTEYVDMTLCTDMSDITKSYLSEKSCFWVAESEKVVGMVGPVDDPTLREKRLQLF HLFVDSEHRRQGIKALVRTVLQFARDQGYSEVILDTGTIQLSAMALYQSMGFKKTGQSFVCVWARLVAL HTVHFIYHLPSSKVGSQ
	<b>TRTRPLEQKLISEEDLAANDILDYKDDDDKV</b>
Tag:	C-Myc/DDK
Predicted MW:	25.4 kDa
Concentration:	>0.05 µg/µL as determined by microplate BCA method
Purity:	> 80% as determined by SDS-PAGE and Coomassie blue staining
Buffer:	25 mM Tris-HCl, 100 mM glycine, pH 7.3, 10% glycerol
Preparation:	Recombinant protein was captured through anti-DDK affinity column followed by conventional chromatography steps.
Note:	For testing in cell culture applications, please filter before use. Note that you may experience some loss of protein during the filtration process.
Storage:	Store at -80°C.
Stability:	Stable for 12 months from the date of receipt of the product under proper storage and handling conditions. Avoid repeated freeze-thaw cycles.
RefSeq:	<u><a href="#">NP_003951</a></u>
Locus ID:	9027
UniProt ID:	<u><a href="#">Q9UHE5</a></u>



[View online »](#)

RefSeq Size: 1073

Cytogenetics: 2p13.1

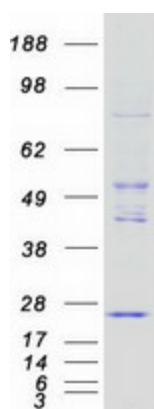
RefSeq ORF: 681

Synonyms: ATase2; CCNAT; CML1; GLA; Hcml1; TSC501; TSC510

**Summary:** This gene, isolated using the differential display method to detect tissue-specific genes, is specifically expressed in kidney and liver. The encoded protein shows amino acid sequence similarity to N-acetyltransferases. A similar protein in *Xenopus* affects cell adhesion and gastrulation movements, and may be localized in the secretory pathway. A highly similar paralog is found in a cluster with this gene. [provided by RefSeq, Sep 2008]

**Protein Families:** Transmembrane

### Product images:



Coomassie blue staining of purified NAT8 protein (Cat# TP303157). The protein was produced from HEK293T cells transfected with NAT8 cDNA clone (Cat# [RC203157]) using MegaTran 2.0 (Cat# [TT210002]).