

Product datasheet for **TP303141M**

IP10 (CXCL10) (NM_001565) Human Recombinant Protein

Product data:

Product Type:	Recombinant Proteins
Description:	Recombinant protein of human chemokine (C-X-C motif) ligand 10 (CXCL10), 100 µg
Species:	Human
Expression Host:	HEK293T
Expression cDNA Clone or AA Sequence:	>RC203141 protein sequence Red =Cloning site Green =Tags(s)
	MNQTAILICCLIFLTLSGIQGVPLSRTVTRCTCISISNQPVNPRSLEKLEIIPASQFCPRVEIATMKKKG EKRCLNPESKAIKNLLKAVSKERSKRSP
	TRTRPLEQKLISEEDLAANDILDYKDDDDKV
Tag:	C-Myc/DDK
Predicted MW:	8.6 kDa
Concentration:	>0.05 µg/µL as determined by microplate BCA method
Purity:	> 80% as determined by SDS-PAGE and Coomassie blue staining
Buffer:	25 mM Tris-HCl, 100 mM glycine, pH 7.3, 10% glycerol
Preparation:	Recombinant protein was captured through anti-DDK affinity column followed by conventional chromatography steps.
Note:	For testing in cell culture applications, please filter before use. Note that you may experience some loss of protein during the filtration process.
Storage:	Store at -80°C.
Stability:	Stable for 12 months from the date of receipt of the product under proper storage and handling conditions. Avoid repeated freeze-thaw cycles.
RefSeq:	NP_001556
Locus ID:	3627
UniProt ID:	P02778
RefSeq Size:	1227
Cytogenetics:	4q21.1



[View online »](#)

RefSeq ORF: 294

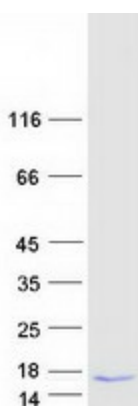
Synonyms: C7; crg-2; gIP-10; IFI10; INP10; IP-10; mob-1; SCYB10

Summary: This antimicrobial gene encodes a chemokine of the CXC subfamily and ligand for the receptor CXCR3. Binding of this protein to CXCR3 results in pleiotropic effects, including stimulation of monocytes, natural killer and T-cell migration, and modulation of adhesion molecule expression. This gene may also be a key regulator of the 'cytokine storm' immune response to SARS-CoV-2 infection. [provided by RefSeq, Sep 2020]

Protein Families: Druggable Genome, Secreted Protein, Transmembrane

Protein Pathways: Chemokine signaling pathway, Cytokine-cytokine receptor interaction, Cytosolic DNA-sensing pathway, RIG-I-like receptor signaling pathway, Toll-like receptor signaling pathway

Product images:



Coomassie blue staining of purified CXCL10 protein (Cat# [TP303141]). The protein was produced from HEK293T cells transfected with CXCL10 cDNA clone (Cat# [RC203141]) using MegaTran 2.0 (Cat# [TT210002]).