

Product datasheet for **TP303141L**

IP10 (CXCL10) (NM_001565) Human Recombinant Protein

Product data:

Product Type: Recombinant Proteins

Description: Recombinant protein of human chemokine (C-X-C motif) ligand 10 (CXCL10), 1 mg

Species: Human

Expression Host: HEK293T

Expression cDNA Clone or AA Sequence: >RC203141 protein sequence
Red=Cloning site **Green**=Tags(s)

MNQTAILICCLIFLTLSGIQGVPLSRTVTRCTCISISNQPVNPRSLEKLEIIPASQFCPRVEIATMKKKG
EKRCLNPESKAIKNLLKAVSKERSKRSP

TRTRPLEQKLISEEDLAANDILDYKDDDDKV

Tag: C-Myc/DDK

Predicted MW: 8.6 kDa

Concentration: >0.05 µg/µL as determined by microplate BCA method

Purity: > 80% as determined by SDS-PAGE and Coomassie blue staining

Buffer: 25 mM Tris-HCl, 100 mM glycine, pH 7.3, 10% glycerol

Preparation: Recombinant protein was captured through anti-DDK affinity column followed by conventional chromatography steps.

Note: For testing in cell culture applications, please filter before use. Note that you may experience some loss of protein during the filtration process.

Storage: Store at -80°C.

Stability: Stable for 12 months from the date of receipt of the product under proper storage and handling conditions. Avoid repeated freeze-thaw cycles.

RefSeq: [NP_001556](#)

Locus ID: 3627

UniProt ID: [P02778](#)

RefSeq Size: 1227

Cytogenetics: 4q21.1



[View online »](#)

RefSeq ORF: 294

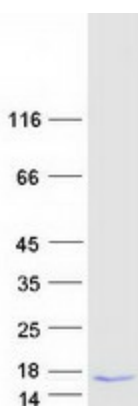
Synonyms: C7; crg-2; gIP-10; IFI10; INP10; IP-10; mob-1; SCYB10

Summary: This antimicrobial gene encodes a chemokine of the CXC subfamily and ligand for the receptor CXCR3. Binding of this protein to CXCR3 results in pleiotropic effects, including stimulation of monocytes, natural killer and T-cell migration, and modulation of adhesion molecule expression. This gene may also be a key regulator of the 'cytokine storm' immune response to SARS-CoV-2 infection. [provided by RefSeq, Sep 2020]

Protein Families: Druggable Genome, Secreted Protein, Transmembrane

Protein Pathways: Chemokine signaling pathway, Cytokine-cytokine receptor interaction, Cytosolic DNA-sensing pathway, RIG-I-like receptor signaling pathway, Toll-like receptor signaling pathway

Product images:



Coomassie blue staining of purified CXCL10 protein (Cat# [TP303141]). The protein was produced from HEK293T cells transfected with CXCL10 cDNA clone (Cat# [RC203141]) using MegaTran 2.0 (Cat# [TT210002]).