

Product datasheet for TP303139L

SERPINB2 (NM_002575) Human Recombinant Protein

Product data:

Product Type:	Recombinant Proteins
Description:	Recombinant protein of human serpin peptidase inhibitor, clade B (ovalbumin), member 2 (SERPINB2), transcript variant 2, 1 mg
Species:	Human
Expression Host:	HEK293T
Expression cDNA Clone or AA Sequence:	>RC203139 protein sequence Red=Cloning site Green=Tags(s)

MEDLCVANTL FALNLFKHLAKASPTQNLFLSPWSISSTMAMVYMGSRGSTEDQMAKVLQFNEVGANAVTP
MTPENFTSCGFMQQIQKGSYPDAILQAQAADKIHSSFRSLSSAINASTGNYLLESVNLKLFGEKSASFREE
YIRLCQKYSSPEQAVDFLECAEEARKKIYSWVKTQTKGKIPNLLPEGSVDGDTRMVLVNAVYFKGKWKWT
PFEKKLNGLYPFRVNSAQRTPVQMMYLREKLNIGYIEDLKAQILELPYAGDVSMFLLLPDEIADVSTGLE
LLESEITYDKLNKWT SKDKMAEDEVEVYIPQFKLEEHYELRSILRSMGMEDAFNKGRANFSGMSERNDLF
LSEVFHQAMVDVNEEGTEAAAGTGGVMTGRTGHGGPQFVADHPFLFLIMHKITNCILFFGRFSSP

TRTRPLEQKLI SEEDLAANDILDYKDDDDKV

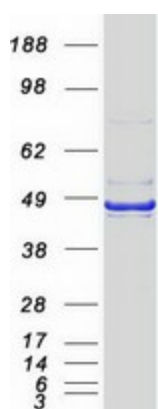
Tag:	C-Myc/DDK
Predicted MW:	46.4 kDa
Concentration:	>0.05 µg/µL as determined by microplate BCA method
Purity:	> 80% as determined by SDS-PAGE and Coomassie blue staining
Buffer:	25 mM Tris-HCl, 100 mM glycine, pH 7.3, 10% glycerol
Bioactivity:	In vivo treatment (intracerebral) (PMID: 30093305)
Preparation:	Recombinant protein was captured through anti-DDK affinity column followed by conventional chromatography steps.
Note:	For testing in cell culture applications, please filter before use. Note that you may experience some loss of protein during the filtration process.
Storage:	Store at -80°C.
Stability:	Stable for 12 months from the date of receipt of the product under proper storage and handling conditions. Avoid repeated freeze-thaw cycles.



[View online >](#)

RefSeq:	NP_002566
Locus ID:	5055
UniProt ID:	P05120
RefSeq Size:	1922
Cytogenetics:	18q21.33-q22.1
RefSeq ORF:	1245
Synonyms:	HsT1201; PAI; PAI-2; PAI2; PLANH2
Summary:	Inhibits urokinase-type plasminogen activator. The monocyte derived PAI-2 is distinct from the endothelial cell-derived PAI-1.[UniProtKB/Swiss-Prot Function]
Protein Families:	Druggable Genome, Secreted Protein

Product images:



Coomassie blue staining of purified SERPINB2 protein (Cat# [TP303139]). The protein was produced from HEK293T cells transfected with SERPINB2 cDNA clone (Cat# [RC203139]) using MegaTran 2.0 (Cat# [TT210002]).