

## Product datasheet for **TP303137M**

### **PFDN4 (NM\_002623) Human Recombinant Protein**

#### Product data:

Product Type:	Recombinant Proteins
Description:	Recombinant protein of human prefoldin subunit 4 (PFDN4), 100 µg
Species:	Human
Expression Host:	HEK293T
Expression cDNA Clone or AA Sequence:	>RC203137 protein sequence <b>Red</b> =Cloning site <b>Green</b> =Tags(s)
	MAATMKKAAAEDVNVTFEDQQKINKFARNTSRITELKEEIEVKKKQLQNLEDACDDIMLADDDCLMIPYQ IGDVFISHSQEETQEMLEEAKKNLQEEIDALESRVESIQRVLADLVQLYAKFGSNINLEADES  <b>TRTRPLEQKLISEEDLAANDILDYKDDDDKV</b>
Tag:	C-Myc/DDK
Predicted MW:	15.1 kDa
Concentration:	>0.05 µg/µL as determined by microplate BCA method
Purity:	> 80% as determined by SDS-PAGE and Coomassie blue staining
Buffer:	25 mM Tris-HCl, 100 mM glycine, pH 7.3, 10% glycerol
Preparation:	Recombinant protein was captured through anti-DDK affinity column followed by conventional chromatography steps.
Note:	For testing in cell culture applications, please filter before use. Note that you may experience some loss of protein during the filtration process.
Storage:	Store at -80°C.
Stability:	Stable for 12 months from the date of receipt of the product under proper storage and handling conditions. Avoid repeated freeze-thaw cycles.
RefSeq:	<a href="#">NP_002614</a>
Locus ID:	5203
UniProt ID:	<a href="#">Q9NQP4</a>
RefSeq Size:	1383
Cytogenetics:	20q13.2

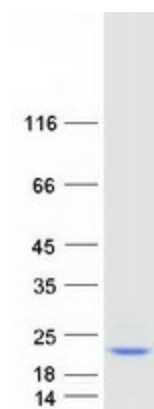

[View online »](#)

RefSeq ORF: 402

Synonyms: C1; PFD4

**Summary:** This gene encodes a member of the prefoldin beta subunit family. The encoded protein is one of six subunits of prefoldin, a molecular chaperone complex that binds and stabilizes newly synthesized polypeptides, thereby allowing them to fold correctly. The complex, consisting of two alpha and four beta subunits, forms a double beta barrel assembly with six protruding coiled-coils. [provided by RefSeq, Jul 2008]

## Product images:



Coomassie blue staining of purified PFDN4 protein (Cat# [TP303137]). The protein was produced from HEK293T cells transfected with PFDN4 cDNA clone (Cat# [RC203137]) using MegaTran 2.0 (Cat# [TT210002]).