



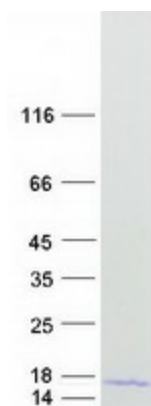
RefSeq ORF: 351

Synonyms: cementoin; ESI; SKALP; WAP3; WFDC14

**Summary:** This gene encodes an elastase-specific inhibitor that functions as an antimicrobial peptide against Gram-positive and Gram-negative bacteria, and fungal pathogens. The protein contains a WAP-type four-disulfide core (WFDC) domain, and is thus a member of the WFDC domain family. Most WFDC gene members are localized to chromosome 20q12-q13 in two clusters: centromeric and telomeric. This gene belongs to the centromeric cluster. Expression of this gene is upregulated by bacterial lipopolysaccharides and cytokines. [provided by RefSeq, Oct 2014]

**Protein Families:** Secreted Protein, Transmembrane

### Product images:



Coomassie blue staining of purified PI3 protein (Cat# [TP303136]). The protein was produced from HEK293T cells transfected with PI3 cDNA clone (Cat# [RC203136]) using MegaTran 2.0 (Cat# [TT210002]).