

Product datasheet for **TP303130M**

SR1 (SRI) (NM_003130) Human Recombinant Protein

Product data:

Product Type:	Recombinant Proteins
Description:	Recombinant protein of human sorcin (SRI), transcript variant 1, 100 µg
Species:	Human
Expression Host:	HEK293T
Expression cDNA Clone or AA Sequence:	>RC203130 protein sequence Red =Cloning site Green =Tags(s)
	MAYPGHPGAGGGYYPGGYGGAPGGPAFPGQTQDPLYGYFAAVAGQDQGQIDADELQRCLTQSGIAGGYKPF NLETCRLMVSMLDRDMSGTMGFNEFKELWAVLNGWRQHFI SFDTDRSGTVDPQELQKALTTMGFRLSPQA VNSIAKRYSTNGKITFDDYIACCVKLRALTD SFRRRDTAQQGVNFPYDDFIQCVMSV
	TRTRPLEQKLISEEDLAANDILDYKDDDDKV
Tag:	C-Myc/DDK
Predicted MW:	21.5 kDa
Concentration:	>0.05 µg/µL as determined by microplate BCA method
Purity:	> 80% as determined by SDS-PAGE and Coomassie blue staining
Buffer:	25 mM Tris-HCl, 100 mM glycine, pH 7.3, 10% glycerol
Preparation:	Recombinant protein was captured through anti-DDK affinity column followed by conventional chromatography steps.
Note:	For testing in cell culture applications, please filter before use. Note that you may experience some loss of protein during the filtration process.
Storage:	Store at -80°C.
Stability:	Stable for 12 months from the date of receipt of the product under proper storage and handling conditions. Avoid repeated freeze-thaw cycles.
RefSeq:	NP_003121
Locus ID:	6717
UniProt ID:	P30626 , B4DHQ6
RefSeq Size:	2036



[View online »](#)

Cytogenetics: 7q21.12

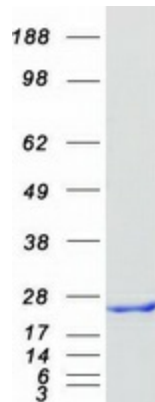
RefSeq ORF: 594

Synonyms: CP-22; CP22; SCN; V19

Summary: This gene encodes a calcium-binding protein with multiple E-F hand domains that relocates from the cytoplasm to the sarcoplasmic reticulum in response to elevated calcium levels. In addition to regulating intracellular calcium homeostasis it also modulates excitation-contraction coupling in the heart. Alternative splicing results in multiple transcript variants encoding distinct proteins. Multiple pseudogenes exist for this gene. [provided by RefSeq, Mar 2012]

Protein Families: Druggable Genome

Product images:



Coomassie blue staining of purified SRI protein (Cat# [TP303130]). The protein was produced from HEK293T cells transfected with SRI cDNA clone (Cat# [RC203130]) using MegaTran 2.0 (Cat# [TT210002]).