

## Product datasheet for TP303122M

### Myosin light chain 3 (MYL3) (NM\_000258) Human Recombinant Protein

#### Product data:

Product Type:	Recombinant Proteins
Description:	Recombinant protein of human myosin, light chain 3, alkali; ventricular, skeletal, slow (MYL3), 100 µg
Species:	Human
Expression Host:	HEK293T
Expression cDNA Clone or AA Sequence:	>RC203122 protein sequence <b>Red</b> =Cloning site <b>Green</b> =Tags(s)
	 MAPKKPEPKKDDAKAAPKAAPAPAPPPEPERPKEVEFDASKIKIEFTPEQIEEFKEAFMLFDRTPKCEMK ITYGQCGDVLRALGQNPTQAEVLRVLGKPRQEELNTKMMDFETFLPMLQHISKNKDTGTIEDFVEGLRVF DKEGNGTVMGAELRHVLA TLGERLTEDEVEKLMAGQEDSNGCINYEAFVKHIMSS  <b>TRTRPLEQKLISEEDLAANDILDYKDDDDKV</b>
Tag:	C-Myc/DDK
Predicted MW:	21.8 kDa
Concentration:	>0.05 µg/µL as determined by microplate BCA method
Purity:	> 80% as determined by SDS-PAGE and Coomassie blue staining
Buffer:	25 mM Tris-HCl, 100 mM glycine, pH 7.3, 10% glycerol
Preparation:	Recombinant protein was captured through anti-DDK affinity column followed by conventional chromatography steps.
Note:	For testing in cell culture applications, please filter before use. Note that you may experience some loss of protein during the filtration process.
Storage:	Store at -80°C.
Stability:	Stable for 12 months from the date of receipt of the product under proper storage and handling conditions. Avoid repeated freeze-thaw cycles.
RefSeq:	<a href="#">NP_000249</a>
Locus ID:	4634
UniProt ID:	<a href="#">P08590</a> , <a href="#">A0A024R2Q5</a>



[View online »](#)

RefSeq Size: 942

Cytogenetics: 3p21.31

RefSeq ORF: 585

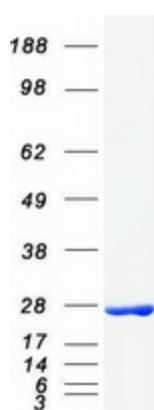
Synonyms: CMH8; MLC-IV/sb; MLC1SB; MLC1V; VLC1; VLCI

**Summary:** MYL3 encodes myosin light chain 3, an alkali light chain also referred to in the literature as both the ventricular isoform and the slow skeletal muscle isoform. Mutations in MYL3 have been identified as a cause of mid-left ventricular chamber type hypertrophic cardiomyopathy. [provided by RefSeq, Jul 2008]

**Protein Families:** Druggable Genome

**Protein Pathways:** Cardiac muscle contraction, Dilated cardiomyopathy, Hypertrophic cardiomyopathy (HCM)

### Product images:



Coomassie blue staining of purified MYL3 protein (Cat# [TP303122]). The protein was produced from HEK293T cells transfected with MYL3 cDNA clone (Cat# [RC203122]) using MegaTran 2.0 (Cat# [TT210002]).