

Product datasheet for **TP303103**

RWDD2A (NM_033411) Human Recombinant Protein

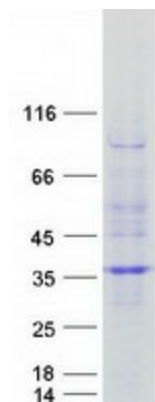
Product data:

Product Type:	Recombinant Proteins
Description:	Recombinant protein of human RWD domain containing 2A (RWDD2A), 20 µg
Species:	Human
Expression Host:	HEK293T
Expression cDNA Clone or AA Sequence:	>RC203103 protein sequence Red =Cloning site Green =Tags(s)
	MSASVKESLQLQLLEMEMLFMFPNQGEVKLEDVNALTNIKRYLEGTREALPPKIEFVITLQIEEPKVKI DLQVTMPHSYPYLALQLFGRSSELDHRHQQLLNKGLTSYIGTFDPGELCVCAAIQWLQDNSASYFLNRKL VYEPSTQAKPVKNTFLRMWIYSHHIYQQDLRKKILDVGKRLDVTGFCMTGKPGIICVEGFKEHC EEFWHT IRYPNWKHISCKHAESVETEGNGEDLRLFHSFEELLLEAHGDYGLRNDYHMNLGQFLEFLKKHKSEHVFQ ILFGIESKSSDS
	TRTRPLEQKLISEEDLAANDILDYKDDDDKV
Tag:	C-Myc/DDK
Predicted MW:	33.7 kDa
Concentration:	>0.05 µg/µL as determined by microplate BCA method
Purity:	> 80% as determined by SDS-PAGE and Coomassie blue staining
Buffer:	25 mM Tris-HCl, 100 mM glycine, pH 7.3, 10% glycerol
Preparation:	Recombinant protein was captured through anti-DDK affinity column followed by conventional chromatography steps.
Note:	For testing in cell culture applications, please filter before use. Note that you may experience some loss of protein during the filtration process.
Storage:	Store at -80°C.
Stability:	Stable for 12 months from the date of receipt of the product under proper storage and handling conditions. Avoid repeated freeze-thaw cycles.
RefSeq:	<u>NP_219479</u>
Locus ID:	112611



[View online »](#)

UniProt ID: Q9UIY3
 RefSeq Size: 1432
 Cytogenetics: 6q14.1
 RefSeq ORF: 876
 Synonyms: dj747H23.2; RWDD2

Product images:


Coomassie blue staining of purified RWDD2A protein (Cat# TP303103). The protein was produced from HEK293T cells transfected with RWDD2A cDNA clone (Cat# [RC203103]) using MegaTran 2.0 (Cat# [TT210002]).