

## Product datasheet for **TP303094M**

### **RAB32 (NM\_006834) Human Recombinant Protein**

#### Product data:

Product Type: Recombinant Proteins

Description: Recombinant protein of human RAB32, member RAS oncogene family (RAB32), 100 µg

Species: Human

Expression Host: HEK293T

Expression cDNA Clone  
or AA Sequence: >RC203094 protein sequence  
**Red**=Cloning site **Green**=Tags(s)

MAGGGAGDPGLGAAAAPAPETREHLFKVLVIGELGVGKTSIIKRYVHQLFSQHYRATIGVDFALKVLNWD  
SRTLVLRLQLWDIAGQERFGNMTRVYYKEAVGAFVFDISRSSTFEAVLKWKSDLDSKVHLPNGSPIPAVL  
LANKCDQNKDSSQSPSQVDQFCKEHGFAGWFETSAKDNINIEEAARFLVEKILVNHQSPNEENDVDKIK  
LDQETLRAENKSQCC

**TRTRPLEQKLISEEDLAANDILDYKDDDDKV**

Tag: C-Myc/DDK

Predicted MW: 24.8 kDa

Concentration: >0.05 µg/µL as determined by microplate BCA method

Purity: > 80% as determined by SDS-PAGE and Coomassie blue staining

Buffer: 25 mM Tris-HCl, 100 mM glycine, pH 7.3, 10% glycerol

Preparation: Recombinant protein was captured through anti-DDK affinity column followed by conventional chromatography steps.

Note: For testing in cell culture applications, please filter before use. Note that you may experience some loss of protein during the filtration process.

Storage: Store at -80°C.

Stability: Stable for 12 months from the date of receipt of the product under proper storage and handling conditions. Avoid repeated freeze-thaw cycles.

RefSeq: [NP\\_006825](#)

Locus ID: 10981

UniProt ID: [Q13637](#)



[View online »](#)

RefSeq Size: 1234

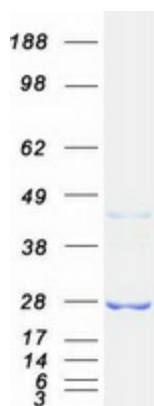
Cytogenetics: 6q24.3

RefSeq ORF: 675

**Summary:** The protein encoded by this gene anchors the type II regulatory subunit of protein kinase A to the mitochondrion and aids in mitochondrial fission. The encoded protein also appears to be involved in autophagy and melanosome secretion. Variations in this gene may be linked to leprosy. [provided by RefSeq, Dec 2015]

**Protein Families:** Druggable Genome

### Product images:



Coomassie blue staining of purified RAB32 protein (Cat# [TP303094]). The protein was produced from HEK293T cells transfected with RAB32 cDNA clone (Cat# [RC203094]) using MegaTran 2.0 (Cat# [TT210002]).