

## Product datasheet for **TP303084L**

### hemoglobin subunit gamma 1 (HBG1) (NM\_000559) Human Recombinant Protein

#### Product data:

**Product Type:** Recombinant Proteins

**Description:** Recombinant protein of human hemoglobin, gamma A (HBG1), 1 mg

**Species:** Human

**Expression Host:** HEK293T

**Expression cDNA Clone or AA Sequence:** >RC203084 protein sequence  
**Red**=Cloning site **Green**=Tags(s)

MGHFTEEDKATITSLWGKVNVEDAGGETLGRLLVYPWTQRFFDSFGNLSSASAIMGNPKVKAHGKKVLT  
SLGDAIKHLDDLKGTFAQLSELHCDKLVDPENFKLLGNVLVTVLAIHFGKEFTPEVQASWQKMVTGVAS  
ALSSRYH

**TR**TRPLEQKLISEEDLAANDILDYKDDDDKV

**Tag:** C-Myc/DDK

**Predicted MW:** 15.9 kDa

**Concentration:** >0.05 µg/µL as determined by microplate BCA method

**Purity:** > 80% as determined by SDS-PAGE and Coomassie blue staining

**Buffer:** 25 mM Tris-HCl, 100 mM glycine, pH 7.3, 10% glycerol

**Preparation:** Recombinant protein was captured through anti-DDK affinity column followed by conventional chromatography steps.

**Note:** For testing in cell culture applications, please filter before use. Note that you may experience some loss of protein during the filtration process.

**Storage:** Store at -80°C.

**Stability:** Stable for 12 months from the date of receipt of the product under proper storage and handling conditions. Avoid repeated freeze-thaw cycles.

**RefSeq:** [NP\\_000550](#)

**Locus ID:** 3047

**UniProt ID:** [P69891](#), [D9YZU8](#)

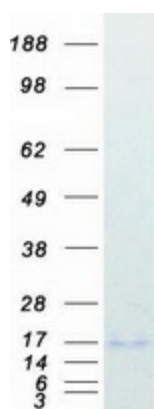
**RefSeq Size:** 584



[View online »](#)

Cytogenetics:	11p15.4
RefSeq ORF:	441
Synonyms:	HBG-T2; HBGA; HBGR; HSGGL1; PRO2979
Summary:	<p>The gamma globin genes (HBG1 and HBG2) are normally expressed in the fetal liver, spleen and bone marrow. Two gamma chains together with two alpha chains constitute fetal hemoglobin (HbF) which is normally replaced by adult hemoglobin (HbA) at birth. In some beta-thalassemias and related conditions, gamma chain production continues into adulthood. The two types of gamma chains differ at residue 136 where glycine is found in the G-gamma product (HBG2) and alanine is found in the A-gamma product (HBG1). The former is predominant at birth. The order of the genes in the beta-globin cluster is: 5'-epsilon -- gamma-G -- gamma-A -- delta -- beta--3'. [provided by RefSeq, Jul 2008]</p>

### Product images:



Coomassie blue staining of purified HBG1 protein (Cat# [TP303084]). The protein was produced from HEK293T cells transfected with HBG1 cDNA clone (Cat# [RC203084]) using MegaTran 2.0 (Cat# [TT210002]).