

Product datasheet for **TP303084**

hemoglobin subunit gamma 1 (HBG1) (NM_000559) Human Recombinant Protein

Product data:

Product Type: Recombinant Proteins

Description: Recombinant protein of human hemoglobin, gamma A (HBG1), 20 µg

Species: Human

Expression Host: HEK293T

**Expression cDNA Clone
or AA Sequence:** >RC203084 protein sequence
Red=Cloning site **Green**=Tags(s)

MGHFTEEDKATITSLWGKVNVEDAGGETLGRLLVYPWTQRFFDSFGNLSSASAIMGNPKVKAHGKKVLT
SLGDAIKHLDDLKGTFAQLSELHCDKLVDPENFKLLGNVLVTVLAIHFGKEFTPEVQASWQKMVTGVAS
ALSSRYH

TRTRPLEQKLISEEDLAANDILDYKDDDDKV

Tag: C-Myc/DDK

Predicted MW: 15.9 kDa

Concentration: >0.05 µg/µL as determined by microplate BCA method

Purity: > 80% as determined by SDS-PAGE and Coomassie blue staining

Buffer: 25 mM Tris-HCl, 100 mM glycine, pH 7.3, 10% glycerol

Preparation: Recombinant protein was captured through anti-DDK affinity column followed by conventional chromatography steps.

Note: For testing in cell culture applications, please filter before use. Note that you may experience some loss of protein during the filtration process.

Storage: Store at -80°C.

Stability: Stable for 12 months from the date of receipt of the product under proper storage and handling conditions. Avoid repeated freeze-thaw cycles.

RefSeq: [NP_000550](#)

Locus ID: 3047

UniProt ID: [P69891](#), [D9YZU8](#)

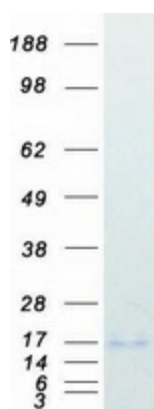
RefSeq Size: 584



[View online »](#)

Cytogenetics:	11p15.4
RefSeq ORF:	441
Synonyms:	HBG-T2; HBGA; HBGR; HSGGL1; PRO2979
Summary:	<p>The gamma globin genes (HBG1 and HBG2) are normally expressed in the fetal liver, spleen and bone marrow. Two gamma chains together with two alpha chains constitute fetal hemoglobin (HbF) which is normally replaced by adult hemoglobin (HbA) at birth. In some beta-thalassemias and related conditions, gamma chain production continues into adulthood. The two types of gamma chains differ at residue 136 where glycine is found in the G-gamma product (HBG2) and alanine is found in the A-gamma product (HBG1). The former is predominant at birth. The order of the genes in the beta-globin cluster is: 5'-epsilon -- gamma-G -- gamma-A -- delta -- beta--3'. [provided by RefSeq, Jul 2008]</p>

Product images:



Coomassie blue staining of purified HBG1 protein (Cat# TP303084). The protein was produced from HEK293T cells transfected with HBG1 cDNA clone (Cat# [RC203084]) using MegaTran 2.0 (Cat# [TT210002]).